

Product and price list
for forwarding trailers and cranes
2016



Pm PFANZELT
MASCHINENBAU



Forwarding trailers and forestry cranes for everyone who works in forests

Dear sales partner,

I am very pleased that you have now received our latest price list for forwarding trailers and forestry cranes. With the revised price list, we are again presenting new and more familiar machines *made in the Allgäu*.

With around 140 employees and trainees, we produce machines for forestry, environmental management and local authority applications. Our cable winches are now frequently found on building sites or at the scenes of accidents and emergencies. For more than 24 years we have taken the needs and requirements of our customers as our starting point. This approach will continue to guide us in the future.

Paul Pfanzelt,
Managing Director

1.0	General information	4
2.0	Company history and philosophy	5
3.0	Pfanzelt forwarding trailers	8
3.1	Areas of application	10
3.2	Overview of models	14
4.0	logLINE forwarding trailers	16
4.1	Technical details	17
4.2	Technical details at a glance	22
4.3	Technical specifications and dimensions	24
4.4	logLINE forwarding trailers L14	26
4.5	logLINE forwarding trailers L16	28
4.6	logLINE forwarding trailers L19	30
5.0	Profi forwarding trailers	32
5.1	Technical details	33
	Drive systems	38
	Transport systems	40
5.2	Technical details at a glance	42
5.3	Technical specifications and dimensions	44
5.4	Profi forwarding trailers P11	46
5.5	Profi forwarding trailers P13	48
5.6	Profi forwarding trailers P15	50
5.7	Profi forwarding trailers P17	52
5.0	Profi forwarding trailers PRICE GROUP 2	54
5.5	Profi forwarding trailers P13 SPECIAL OFFER PRICE GROUP 2	54
5.6	Profi forwarding trailers P15 SPECIAL OFFER PRICE GROUP 2	56
6.0	S-line forwarding trailers PRICE GROUP 2	58
6.1	Technical details	58
6.2	Technical details at a glance	64
6.3	Technical specifications and dimensions	66
6.4	S-line forwarding trailers S6 PRICE GROUP 2	68
6.5	S-line forwarding trailers S9 PRICE GROUP 2	70
6.6	S-line forwarding trailers S11 PRICE GROUP 2	72
7.0	Tyres	74
8.0	Pfanzelt cranes	76
8.1	Loading crane	78
8.2	Technical details	79
8.3	Grippers	86
8.4	Technical specifications of loading cranes	88
8.5	Offroad crane applications	94
8.6	Technical specifications of add-on cranes	95
8.7	3-point hitch forwarding trailers PRICE GROUP 2	98



Contact person

Sales:

Peter Assemann

Czech Republic

Tel. +49 (0) 170 3 74 40 21

E-Mail peter.assemann@pfanzelt-maschinenbau.de

Dieter Salzmann

Pfanzelt factory representative, Switzerland, Italy, Slovenia, Romania

Tel. +49 (0) 174 2 43 39 70

Tel. +49 (0) 8860 92 17 - 29 29

E-Mail dieter.salzmann@pfanzelt-maschinenbau.de

Hans-Jörg Damm

France, Luxembourg, Netherlands, Belgium, Denmark

Tel. +49 (0) 172 8 48 70 83

E-Mail hans-joerg.damm@pfanzelt-maschinenbau.de

Wolfgang Kaltenberger

Pfanzelt factory representative for export

Tel. +43 (0) 676 3 74 40 42

E-Mail wolfgang.kaltenberger@pfanzelt-maschinenbau.de

Customer service and spare parts

Pfanzelt Service Hotline

Tel. +49 (0) 8860 92 17 - 29 14

E-Mail info@pfanzelt-maschinenbau.de



Before you start using the new Pfanzelt price and product list for forwarding trailers in your sales work, we would like to say something about the layout of the price list so that you can easily find your way around for use in customer advice and sales pitches.

The logLINE, Profi and S-line series are separately listed according to model and accessories. Please note the changed discount structure for products of the S-line series. This is indicated with the note "Product group 2".

In the presentations of individual products, each forwarding trailer is shown on a double page spread with the respectively available accessories. To simplify your use of the price list, each forwarding trailer is depicted with the essential accessories. If it is necessary due to special sales situations to discount individual items already included in the prices, the price reduction for the individual items is always stated in the accessories block on the double page.

If you have any questions on the products and price list, please contact the responsible factory representative.

Validity

The publication of this price list renders all existing price lists and price sheets invalid. The new price list is valid until 30 Sept. 2016.

Prices

The prices are net of VAT at the statutory rate.

Delivery conditions

Delivery is exclusively ex works. Orders of merchandise are governed by our General Terms & Conditions that you can download from our website www.pfanzelt-maschinenbau.de.

Warranty conditions

The warranty for Pfanzelt products is for 12 months or 1,000 operating hours. Wearing parts such as brakes or similar parts are exempted.

In relation to spare parts orders and warranty applications, it is essential that the forwarding trailer or crane type and serial number are stated, otherwise the orders and applications cannot be processed.

Form/brochure centre

You can download the forms for spare parts orders and warranty/goodwill applications from the Service section of our website www.pfanzelt-maschinenbau.de. There can you order all brochures and promotional material. These will usually be delivered within 2 working days.

Miscellaneous

Structural, price and technical changes reserved. Typographical and other errors reserved. All undertakings by sales staff in relation to modifications or special solutions shall only apply after written confirmation by the works.



The idea smithy from the Allgäu.

Pfanzelt Maschinenbau GmbH was founded in 1991 by Paul Pfanzelt, initially focusing on the production and installation of simple geared cable winches for 3-point, quick-fit and fixed attachment to agricultural tractors. With constantly increasing production volumes of cable winches, in 1996 another product was added to the range – the forwarding trailers. Over the years, the range has been further extended to become the widest of any European forestry machine manufacturer, and contains much more than add-on tools for agricultural tractors and conversions of these.

In 2001, Pfanzelt began to produce tractors of its own and now manufactures three different vehicle models for agriculture and forestry. In addition to the Felix specialised forestry tractor, since 2005 the range has also included the Pm Trac multipurpose tractor.

However also after 2005, Pfanzelt constantly presented new innovations and extended to product range. Thus the S-line series for geared cable winches and forwarding trailers was introduced in 2010 – a new series adapted to the requirements of semi-professionals and forest owners. In 2015, the product range was extended with top of the range forwarding trailers and cable winches of the logLINE series.

Now we have become a forge for new ideas and attach great importance to close contact with our customers. After all, many of our innovations are the direct result of requirements, suggestions and wishes from our customers that we are happy to address and turn into concrete products. With our machines we constantly pursue the goal of providing solutions that make everyday work as simple and cost effective as possible. The company is located in the thickly wooded foothills of the Alps, giving us a perfect proving ground for our products literally directly outside the front door. We only ship products that are tried and tested under real operating conditions.



HERGESTELLT IN
DEUTSCHLAND



Quality made in Germany

With a highly qualified workforce and its trusted partner companies, Pfanzelt Maschinenbau manufactures its products in Germany. In contrast to today's standard production philosophy, based on the purchase of many bought-in parts, Pfanzelt prefers to maximise the percentage of parts manufactured in-house. Besides guaranteeing the reliability and quality of all components, this also ensures short delivery times. On the other, this also means that the production of machines often involves more time and effort than with some of our competitors. However, to avoid an excessively high purchase price for the products, we obviously take the going market rates as our starting point for our pricing. Accordingly, a part produced in-house does not necessarily cost more than a bought-in part. Besides in-house production, the extensive in-house know-how enables flexible reaction to changes and to product developments.



Top: In-house production of our own components means that they are optimally suited for the finished product.

Bottom: An ergonomically designed cab is essential for drivers when working.





Press comments

The Pfanzelt RW 15100 is the largest of all tested trailers. The first things you notice are its chunky wheels and the friction drive. **Perfect safety equipment including** wheel chocks comes as standard. [...] The LK 5180 crane can be responsively controlled with its Danfoss EHC controller. All functions can be easily combined and several can be actuated simultaneously.

Trade journal top agrar 6/2009

Flexible and lots of variants.

Pfanzelt product range offers customised solutions designed to fulfil every task in relation to meeting the growing need for wood as a raw material, whether as lumber or biomass. The challenge, whether loading or transporting big or small loads, is always to be able to work efficiently and ergonomically.

Pfanzelt forwarding trailers are divided into three product groups in accordance with requirements: S-line, Profi and logLINE

S-line forwarding trailers

The Pfanzelt S-line forwarding trailers are especially designed for use by private forest owners. With the low profile design, hydraulic overrun brake and licensed for speeds up to 40 km/h on public roads, the S-line forwarding trailers are universal machines with the same underlying engineering as professional forwarding trailers.

► Page 54

Profi forwarding trailer

With its Profi forwarding trailer series, Pfanzelt offers the most extensive forwarding trailer range on the market. With its special modular design, the user can put together the forwarding trailer according to his own requirements and choose between various weight classes, brake systems, loading cranes and an extensive range of accessories.

► Page 32

logLINE forwarding trailers

The logLINE forwarding trailer series rounds off the Pfanzelt forwarding trailer range with three top of the range models. These models are characterised by uncompromising, powerful professional engineering.

► Page 16



HERGESTELLT IN DEUTSCHLAND

Tested quality:



Press comments

"The Pfanzelt RW 1177 is a robustly constructed trailer with strikingly good safety features. **The excellent crane is perfect for professional needs.** [...] The LK 4177 crane is a real work horse. All functions can be easily combined and several can be actuated simultaneously. The crane with top-mounted main cylinder performs solid lifting work. In addition to the trailer, it lifted 1,817 kg in the test."

"top agrar" magazine 6/2009



Forwarding in standing timber

Forwarding in standing timber and transport to the forest road places high demands on the engineering of the forwarding trailer. Ergonomical and safe working is guaranteed by the pivoting draw bar with large steering angle, the two powerful pivoting cylinders as well as the bogie axle with large overclimb capacity.



On-road transport

On-road transport also places demands on the engineering and safety of the forwarding trailer. All Pfanzelt forwarding trailers are optionally available with a road license for 25 and 40 km/h. The prerequisite for this is equipment of the forwarding trailer with a compressed air brake system.





Transport systems

Various floor pan systems enable the flexible use of ergonomically optimised forwarding trailers. The Pfanzen transport systems thus enable easy transport of branches and brush material in forests and on the road. Especially for road transport, numerous safety measures can be omitted.

The high-sided floor pan for cut material is suitable for the transport of light brush and treetop material, while the standard floor pan is ideal for the combined transport of branches and trunks. If this is permanently mounted on the vehicle, this protects the tyres from damage by the gripper.



3-side tipper bed (S-line only)

For the transport of dry bulk, Pfanzen forwarding trailers can be fitted with a 3-side tipper bed. This is mounted as a swap body. The tipper bed is mounted and removed with 4 parking supports. After removal, the forwarding trailer can be fitted with stanchions without any additional conversion work.



Round bale loading body (S-line only)

For simple and secure transport of round bales, the Pfanzen accessory range offers the round bale loading bridge.

woodZIPPER

The new and economical loading and transport system for forwarding trailers facilitates two different work processes. The woodZIPPER with two hydraulically actuated clamping stanchions compresses branch, treetop or wood fuel from short-cycle plantations. It thus increases the material quantity per transport cycle by around a third. The second design role is the transport of short timber. When working in sloped forestry tracks, the stacked short timber can be pushed to the upper side of the slope. This means that the track can be used longer and less damage is caused to the ground.



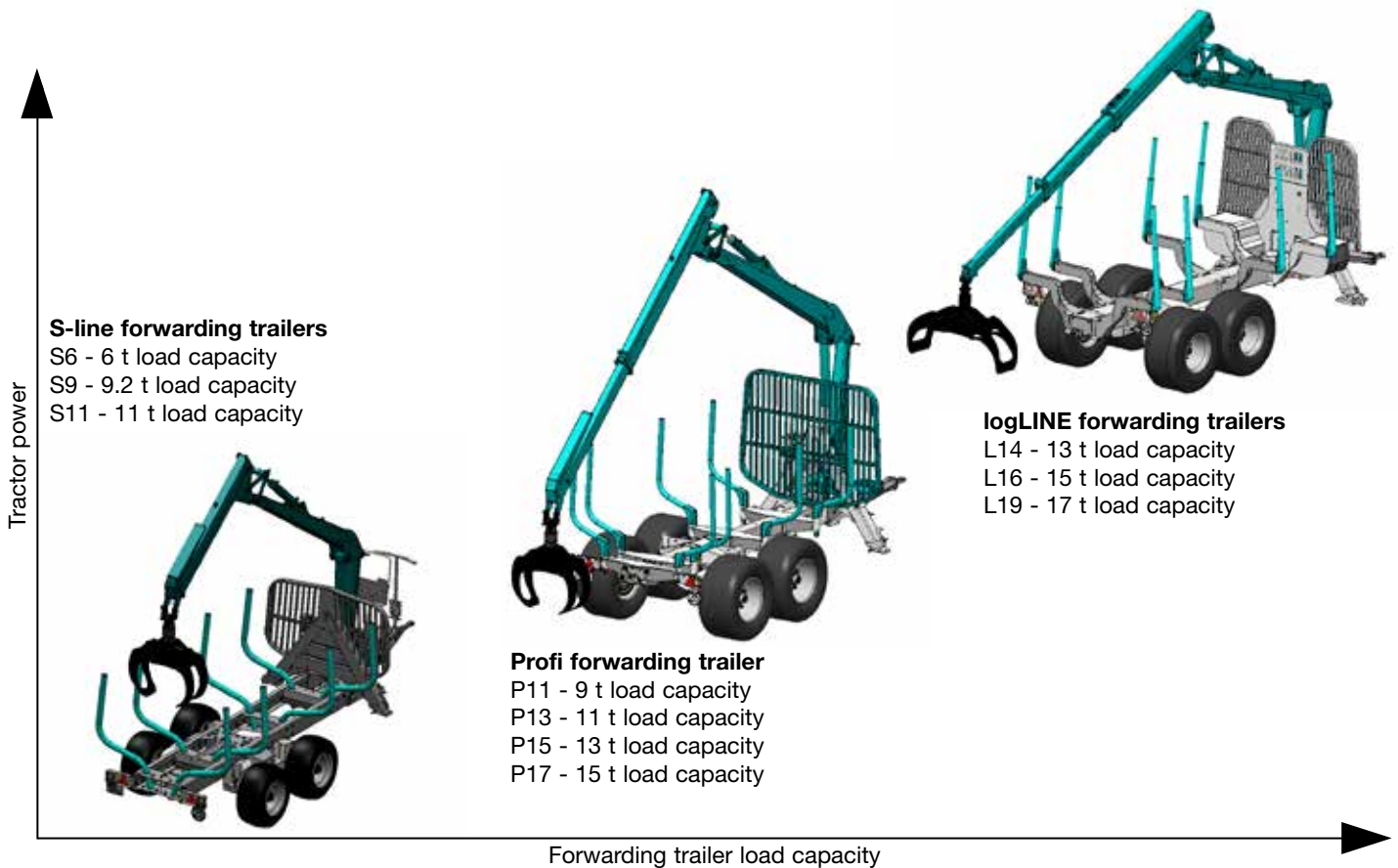


During a demonstration, the MKM 8x8 2380, consisting of a Pm Trac and a powered Pfanzelt forwarding trailer was publicly put through its paces for the first time in the forest. **"The machine was completely convincing [...] in all respects.** While all other machines struggled with the ground conditions [...], none of the wheels of the closely observed multipurpose tractor started spinning as it drove over the edge of a ditch when fully laden with cut beech."

"Forst und Technik" magazine 1/2015

Pm 3.2 Overview of models

The Pfanzelt forwarding trailers, depending on which tractor system is used, what is to be loaded and what conditions apply, are available in three product groups.



S-line forwarding trailers



S6 - Lightest Pfanzelt forwarding trailer

With the new S6 forwarding trailer, Pfanzelt is extending its range with a new bottom of range model. This model is perfectly suited for small tractors for semiprofessionals or tree farmers.



S9 – Compact and powerful forwarding trailer

Launched in 2009, the S9 S-line forwarding trailer (old designation 9242), it is now the best seller of the S-line series. Optionally, the compact forwarding trailer is equipped with a hydraulic overrun brake.



S11 - Large flat bed for greater wood load

Equipped with a larger face grille surface and a 45 cm longer flat bed, the S11 model offers the tried & tested technology of the S-line forwarding trailer with a greater loading capacity. The forwarding trailer can optionally be equipped with a forestry crane with an 8 m reach.

Profi forwarding trailer



P11 - Lightest Pfanzelt Profi forwarding trailer

The P11 forwarding trailer with 9.0 t load capacity is the entry level model in the Pfanzelt Profi forwarding trailer range. With its very low dead weight, the forwarding trailer is ideal for small tractor units.



P13 - Affordable complete package

The P13 forwarding trailers are characterized by high performance with 11 t load capacity combined with compact dimensions and are thus ideal machines for working in dense standing timber. The frame extension in combination with sliding axle enables optimum weight distribution with great load flexibility.



P15 - Optimum loading weight

The robust P15 Profi forwarding trailer is designed for the demanding forestry professional and is also available with the Pfanzelt friction drive. The forwarding trailer with a 13.0 t load capacity offers a high load bearing capacity with low dead weight for operations in standing timber.



P17 - forwarding trailers for heavy duty missions

With its P17 Profi forwarding trailer, Pfanzelt has created a forwarding trailer with a very large loading volume and a high load capacity of 15 t. The expanded central spar is rated for the highest loads.

logLINE forwarding trailers



L14 - The smallest of the greats

With powerful technology, the L14 forwarding trailer rated for a total weight of 14 t is the entry level model into the logLINE series. Equipped with a 6 m/t class forestry crane, the forwarding trailer is optimised for the discerning forestry contractor.



L16 - Optimised for heavy duty applications

The 16L rated for a total weight of 16 t offers powerful professional technology for the forestry contractor. Equipped with a 7 m/t class forestry crane, the forwarding trailer is optimised for heavy duty logging.



L19 - Uncompromising performance

The forwarding trailer forms the top model in the Pfanzelt forwarding trailer range. The 19L forwarding trailer with a rated total load capacity of 19 t offers uncompromising performance and maximised economic efficiency.



Generously dimensioned logging trailer for maximum performance.

With the most extensive forwarding trailer range on the market, Pfanzelt offers every professional user the option to put together a customised forwarding trailer according to his own specific requirements.

The forwarding trailers of the logLINE series with a permitted total weight of 14, 16 or 19 t offers powerful professional technology for forestry contractors. Equipped with a 7 m/t class forestry crane, the forwarding trailer is optimised for heavy duty logging.

Pfanzelt leverages its many years of design experience to ensure ease of operation, robust construction and a high level of safety. All Pfanzelt forwarding trailers and loading cranes are tested and certified according to BG regulations by an independent crane expert before delivery.

Technical details that impress:

- Load capacity on non-public roads 13 - 17 t
- Reinforced central tubular frame with frame slide
- Operating permit for public roads up to 25, 40 or 50 km/h (depending on the total weight with selected braking system)
- Optional with spring-loading steerable draw bar (L16 and L19 only)
- Modern and powerful professional crane with reach up to 10 m and 7 m/t lifting force.
- A-column support for optimum parking stability
- Two large storage bins for lashing belts and tools
- Accessories for flexible application: Wheel hub drive, crane cable winch etc.



HERGESTELLT IN DEUTSCHLAND

Tested quality:



4.1 logLINE forwarding trailers – technical specs



Frame

The strong frame structure which is based on a torsion-resistant central spar is the basis for the excellent off-road handling properties of the Pfanzelt forwarding trailer, even when loaded. The central spar is made of fine grain steels to cope with the highest loads. Besides maximum stability, this design offers maximum ground clearance. The frame is only welded to the crane support in the front area, meaning that the strength of the central spar is not compromised.

The central spar has a double wall in the crane mounting plate area to provide the forwarding trailer with additional strength for heavy crane attachments. A second spar has been carefully welded to the central spar to exacting technical standards.



Sliding axle

The flat bed can be extended by up to 1,500 mm for the transport of various timber lengths by means of an integrated, extensible frame.

The greatest possible flexibility for loading of the forwarding trailer is also assured by the stanchions whose position can be changed by sliding them along the central spar and the axle bogie. The operator thus has the option to optimally adjust the stanchion size to various fixed lengths. By sliding the axle bogie, heavy loads can be precisely adjusted to the tractor type, thus avoiding the drawbar load being exceeded and also preventing a negative drawbar load.

Bogie axle

The bogie axle of Pfanzelt forwarding trailers offers stability during crane operation and the best possible drive characteristics, especially in forwarding trails. The large pendulum travel of the bogie axle has a range of up to 360 mm. This enables that the trailer can safely drive over branches and other obstacles.

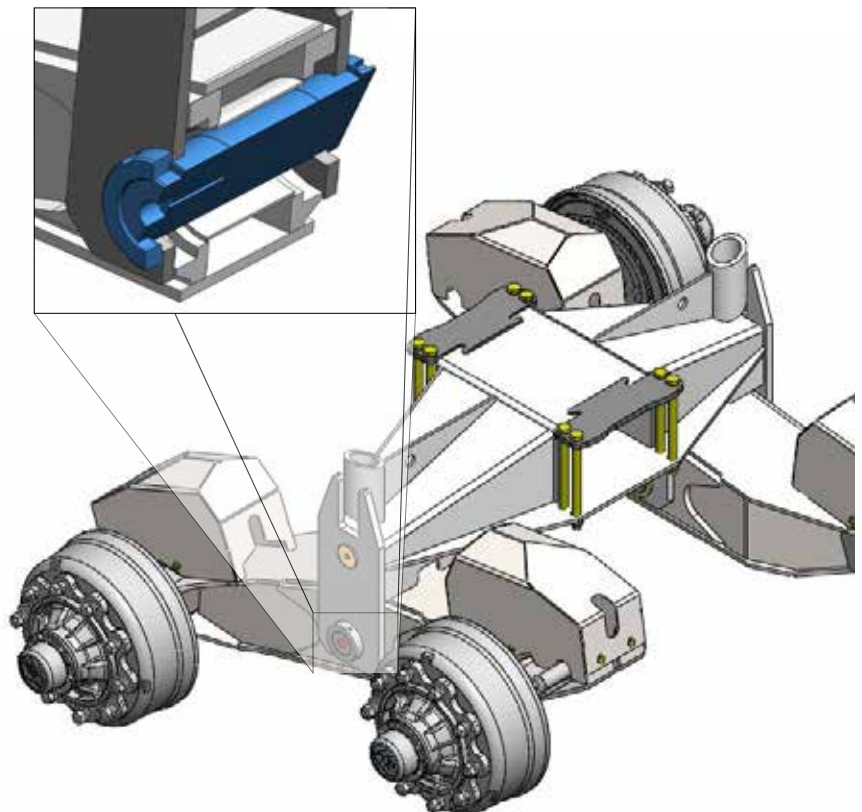
The even distribution of the ground pressure is another big advantage.

For protection against damage due to driving over trunks and projecting branches, the underside of the trailer is smooth. Cables and hoses are concealed for maximum protection.



Bearings

The bogie axle is mounted on lubricatable and adjustable spherical articulated bearings. This guarantees true running for many years.





Steerable draw bar

Pfanzelt forwarding trailers are equipped as standard with a pivoting draw bar with a large steering angle. The maximum excursion from the centre is +/- 860 mm. Two powerful hydraulic cylinders that can be operated from the tractor cab, even when the assembly is in motion, facilitate operation even when the laden forwarding trailer is turned against the slope. The pivoting moment is thus 35 kNm (at an oil pressure of 200 bar).

The steerable draw bar can be mechanically locked when driving on roads. The draw bar is locked by means of a one-man system with two protective flaps.

Hitch

The draw bar of the logLINE forwarding trailer is available in a bottom hitch version. The bearings of the pivoting draw bar in the form of lubricatable and adjustable spherical articulated bearings ensure long-term operating safety of this component that is subject to heavy loading.

When the trailer is fitted with an independent hydraulic oil supply, the powerful piston pump is protected from damage by encapsulated mounting either above or below the draw bar.



Draw bar suspension/tilt

In the L19 series model, and optionally in the L16 model, the forwarding trailer can be equipped with a draw bar suspension / tilt system. The steering draw bar also become a tilting device by the provision of an additional cylinder. This feature enables the flat bed to be placed in a horizontal position and the crane column vertically on slopes.

During travel, this device acts as suspension, thus increasing driving safety and comfort.



Stanchion widening

All stanchions can be extended laterally. The stanchion cage extension is thus 300 mm. This increase the flat bed area by 0.5 m².

Permit for public roads

Travel on public roads is no problem for Panzelt machines, even when loaded. With the TÜV certificate, the forwarding trailer can be licensed for top speeds of 25 or 40 km/h on public roads.

Brake systems

Panzelt logLINE forwarding trailers are equipped as standard with a braking system that acts on four wheels. This braking system is pneumatically actuated. The compact diaphragm brake cylinders are completely encapsulated with a protective hood. This means that the brake system is protected from damage by branches or the gripper.



Lighting

The lighting system using LED lights is integrated in the frame. To protect the lights when working in standing timber, these are protected by a robust plexi-glass panel.



Tool box

On the two sides of the forwarding trailer, there are two large storage bins with lockable lids. Here chain saws, fuel canisters and lashing straps can be neatly stowed away.







4.2 logLINE forwarding trailer - the most important features



Power link system – toggle lever control – guarantees manoeuvrable crane operation, greater reach and more lifting power.



A carefully conceived system of **concealed hoses** over the entire crane minimises downtime.



The mounting of all positive locking bolts in lubricatable **bronze bushes** maximises maintenance intervals and ensures stability under pressure.



The crane is rated according to crane loading class B4 for permanent dynamic loading.



Protected from damage during loading operations, the main boom **cylinder is installed rotated**.



Rotary transmissions maximise the functional safety and service life of the hydraulic hoses.



Massive and robust **front grilles** for optimum safety during crane operation and when driving on public roads.



The hydraulic hoses are run in a **hose shaft** to protect the user.



The large **oil supply tank** is installed so as to protect it from damage and prevent impairment of the field of vision.



The especially robust and powerful **four cylinder slewing gear** made of cast metal with a high pivoting moment.



A **one-man system** for **mechanically locking** the steerable draw bar when driving on public roads.



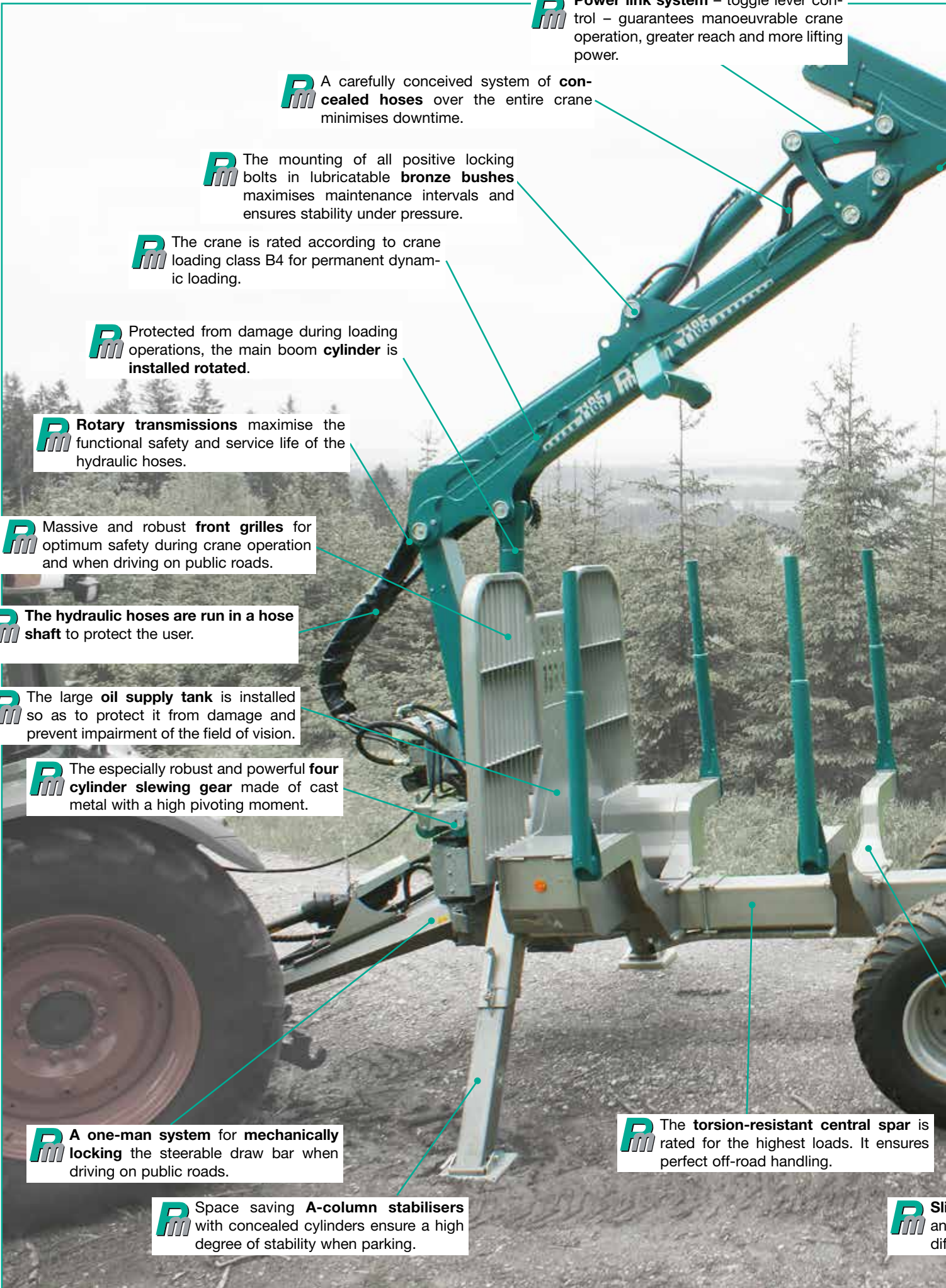
Space saving **A-column stabilisers** with concealed cylinders ensure a high degree of stability when parking.



The **torsion-resistant central spar** is rated for the highest loads. It ensures perfect off-road handling.



SI...
an...
dif...



ures at a glance

R An optional **crane floodlight** turns night to day and reliably illuminates the gripper zone.

R The **frame extension** makes it possible to extend the flat bed in several steps up to a maximum of 1,500 mm.

R The **telescopic cylinder** is internally mounted, protecting it from damage.

R The electrically actuated **quick-action valve**, supplied as standard, ensures rapid telescopic extension of simple telescopic booms.

R Equipped as standard with a powerful **flange rotator** and on request also with a **double pendulum brake**.

R Various **grippers** for every application: Double clam shell grippers, 4-finger grippers, earth grippers

R Various **drive systems** enable maximum traction under difficult terrain conditions.

R The **4-wheel pneumatic brake system** with accumulator offers safety under way in the forest or on the roads.

R **Lubricatable, adjustable articulated bearings** ensure that the bogie axle runs true.

R The **sliding bogie axle** guarantees optimum weight distribution for every load.

Sliding stanchion arrays ensure safety and easy crane operation with loads of different lengths.



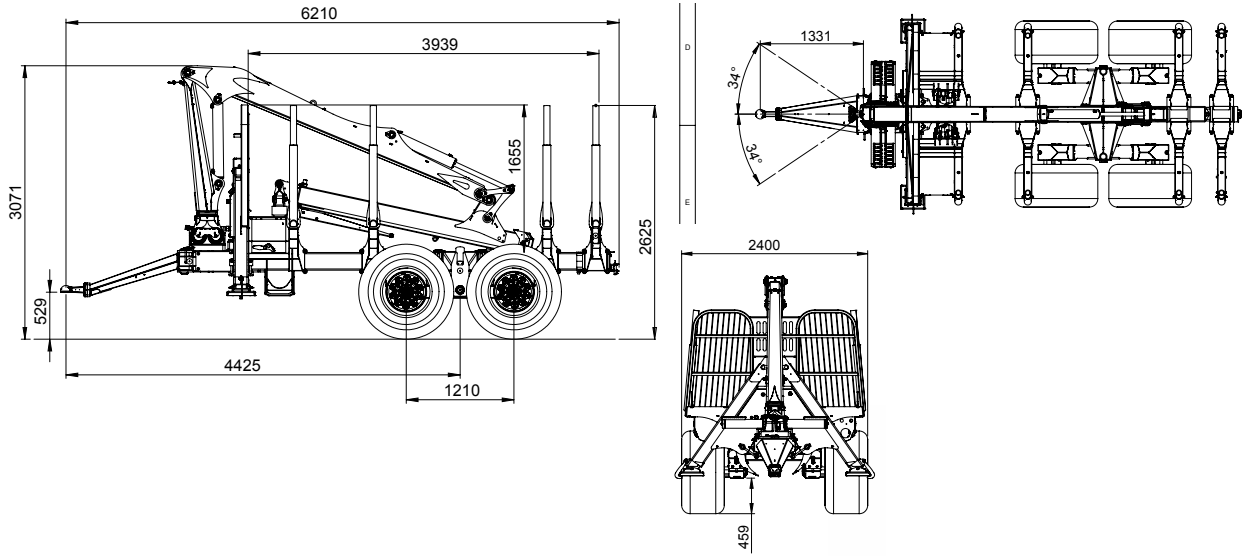
4.3 logLINE forwarding trailers – technical specs

logLINE	L14	L16	L19
Construction			
Frame structure	Central spar	Central spar	Central sparCentral
Central spar thickness (mm)	200x200x10	250x250x8	350x250x8
Frame extension 1500 mm	●	●	● ●
Stanchion pairs	4 pcs (extensible sideways by 300 mm)		
Hydraulic pivoting draw bar with 2 cylinders	●	●	●
	+/-790mm; +/-34°	+/-860mm; +/-37°	+/-860mm; +/-37°
Draw bar tilting / suspension system	-	○	○
Pivoting moment	22.5 kN	35 kN	35 kNm
Front grille area	2.98 - 3.37 m ²	3.25 - 3.75 m ²	3.5 - 4.00 m ²
Chassis	Bogie 1210 mm wheelbase	Bogie, 1210mm wheelbase	1210mm wheelbase
Bogie pendulum travel	+/-17°; +/-180mm	+/-17°; +/-180mm	+/-17°; +/-180mm
Track width	1850mm	1800 mm	1900 mm
Equipment			
Load capacity on non-public roads	13.0 t	15.0 t	17.0 t
Permitted total weight on public roads	14.0 t	16.0 t	19.0 t
Dead weight with crane	approx. 4.5 t	approx. 5.5 t	approx. 6.0 t
Braking system	4-wheel pneumatic braking system with spring-loading		
Tyres			
Dimensions	560/45-22.5" 12 PR stud tread	600/50-22.5" 12 PR stud tread	600/50-22.5" 12 PR stud tread
Rim flange reinforcement, spar sleeve protection	●	●	●
Drive			
Wheel hub drive	○	○	○
Loading crane			
	LK 6280	LK 7185	LK 7185
Reach	7,750 mm	8,300 mm	8,300 mm
Lift moment net	61 kNm	70 kNm	70 kNm
Pivoting moment	25 kNm	27 kNm	27 kNm
Double clam shell gripper	●	●	●
Crane control	EHC control with 2 Danfoss Profi1 joysticks		

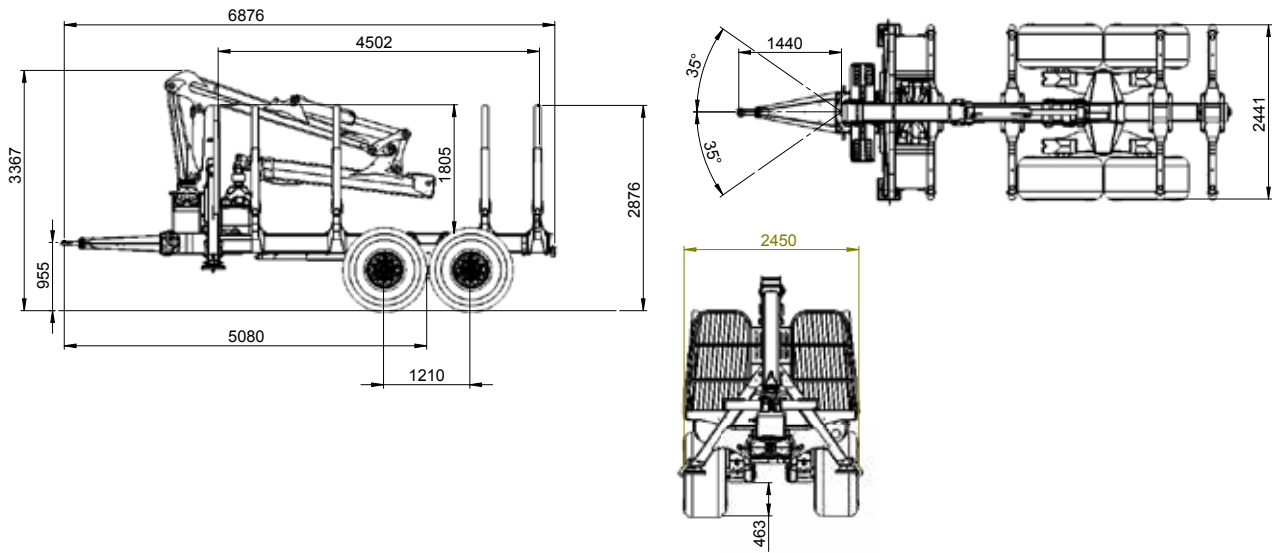
● Standard ○ Option - Not deliverable

Dimensions

L14



L16



L19

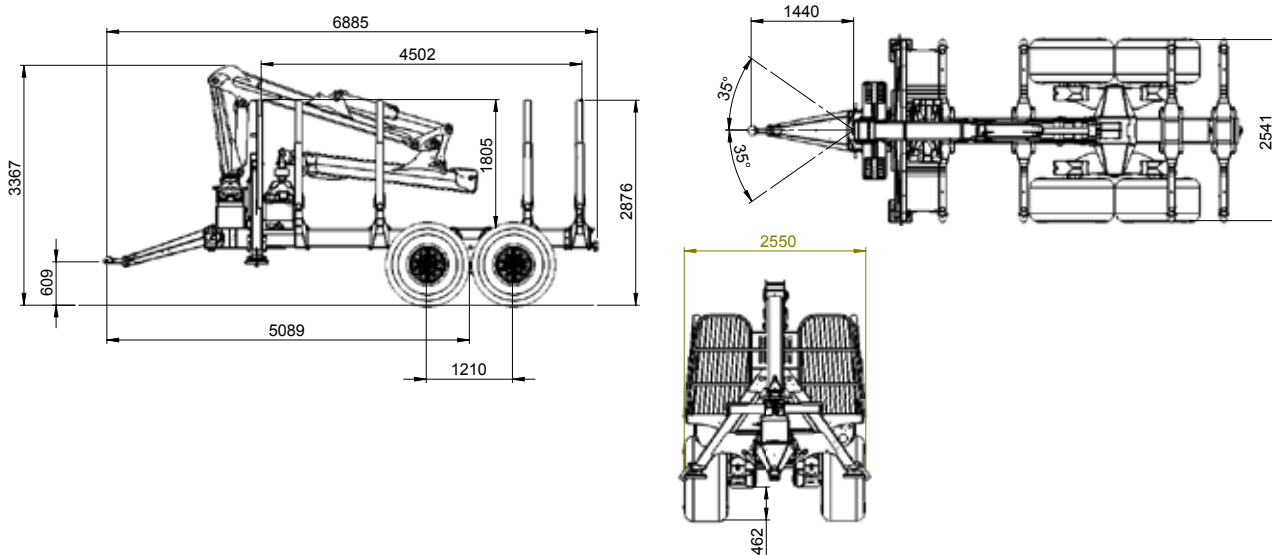




Illustration may vary from original.

The most important sales arguments:

- Unparalleled stability thanks to reinforced central spar frame
- Frame extension and sliding axles for optimum weight distribution combined with a high degree of load flexibility
- Powerful professional crane with fast action valve for even quicker telescopic extension
- TÜV certificate with 25 and 40 km/h possible

Required tractor equipment:

- 1x 2-way valve for pivoting drawing bar
- 1x 1-way valve and pressureless return flow for crane control (not with independent oil supply)
- 1x two line pneumatic braking system

Technical specs

L14

Design	Central spar (200 x 200 x 10 mm)
Double walled in crane support zone	•
Long flat bed	4,000 - 5,500 mm
Frame extension	1,500 mm (mechanically extensible)
Fender frame as per UVV (accident prevention regulations)	•
Flat bed area	2.98 - 3.37 m ²
Stanchion pairs	4 pcs, insertable and rotatable, extensible sideways by 300 mm
Hydraulic pivoting draw bar with 2 cylinders	•
Pivoting moment (at 200 bar)	22.5 kNm
Maximum excursion from centre	+/- 34° / +/- 790 mm
Load capacity on non-public roads	13.0 t
Permitted total weight on public roads	14.0 t
Dead weight (depending on additional equipment) approx.	4.5 t
Draw bar, bottom hitch	•
Ball head hitch K80	•
Bogie axle swing travel	+/- 17° / +/- 180 mm
Braking system	4-wheel pneumatic braking system with spring loading
Braking area	406x120 mm, 10-hole rim
Tyres	560/45-22.5" 12 PR, stud profile
TÜV certification 25 km/h	•
A-column support (with large outrigger plates)	•

Loading crane

LK 6280

Reach	7,750 mm
Lift moment net	61 kNm
Pivoting moment	25 kNm
Crane control	8-way EHC control with two joysticks
Pm 270 - Double clam shell gripper	•
Pendulum with internally laid concealed hoses	•
Hydraulic oil cooler with electric fan	•
Independent oil supply with fixed pump (130 ltr., 200 bar)	•

Total price

72,400 €

On this page you can find optional accessories suitable for the logLINE forwarding trailer L14.
You will find images, technical information and further explanations on the accessory options on the previous pages.

Category	Name	Order no.	Price
Tyres	Complete wheel 600/50-22.5" Trelleborg T404 (surcharge) ► p. 74	R.600.1048	1,620 €
Brake system	Combination brake 4-wheel pneumatic and hydraulic 4-wheel brake (surcharge)	VS.KOB444	1,940 €
Hitch	without ball head suspension K80 for forwarding trailer	VS.KU80	./ 440 €
Licensing	TÜV certificate 40 km/h incl. quick-change wheel cover. (surcharge instead of 25 km/h)	VS.TUEV40.1	860 €
Loading crane	Loading crane LK 62100 with 9,800 mm reach and 61 kNm (surcharge)	VS.KRAN62100	4,070 €
	Loading crane LK 7185 with 8,300 mm reach and 70 kNm (surcharge)	VS.KRAN7185	7,400 €
	Loading crane LK 71100 with 10,000 mm reach and 70 kNm (surcharge)	VS.KRAN71100	9,300 €
Oil supply	Independent oil supply with fixed load-sensing pump (117 ltr., 230 bar) (surcharge)	VS.EIGOEL117	2,020 €
Crane control	EHC control Danfoss 8-way Autec control panel (reduced price)	VS.EHC8KABEL	./ 390 €
	EHC control Danfoss 8-way Autec remote control panel (reduced price)	VS.EHC8FUNK	300 €
	Load sensing connection for Danfoss control block	VS.LOAD-SENSING CONNECTION	247 €
Gripper and rotator	Pfanzelt gripper Pm 230 (reduced price instead of Pm 270)	VS.PM230	./ 1,380 €
	Pfanzelt 4-finger gripper Pm 230 (reduced price instead of Pm 270)	VS.PM2304FING	./ 550 €
	Pfanzelt 4-finger gripper Pm 270 (surcharge)	VS.PM2704FING	930 €
Miscellaneous	Crane cable winch, hydraulically driven	VS.KSW	3,230 €
	Operating hour counter (crane operation)	VS.BSTDZ	350 €
	High seat for loading crane	VS.HSLK	1,200 €
	H3 flood light in folding arm with flood light protection	VS.ARBEITSSCHEINH3KNICK	460 €
	LED flood light in folding arm with flood light protection	VS.ARBEITSSCHEINLEDKNICK	740 €
	Two H3 flood light on crane column with flood light protection	VS.ARBEITSSCHEINH3KRANSAEULE	760 €
Drive	Wheel hub drive on rear axle with oil supply from tractor	VS.RADNABENANTRIEB8LOCHDW	18,300 €
	Wheel hub drive on rear axle via separate oil supply	VS.RADNABENANTRIEB8LOCHEIG	18,300 €



- The most important sales arguments:**
- Unparalleled stability thanks to reinforced central spar frame
 - Frame extension and sliding axles for optimum weight distribution combined with a high degree of load flexibility
 - TÜV certificate with 25 and 40 km/h possible

- Required tractor equipment:**
- 1x 2-way valve for pivoting drawing bar
 - 1x 1-way valve and pressureless return flow for crane control (not with independent oil supply)
 - 1x two line pneumatic braking system

Technical specs	L16
Design	Central spar (250 x 250 x 8 mm)
Double walled in crane support zone	•
Long flat bed	4,500 - 6,500 mm
Frame extension	1,500 mm (mechanically extensible)
Fender frame as per UVV (accident prevention regulations)	•
Flat bed area	3.25 - 3.75 m ²
Stanchion pairs	4 pcs, insertable and rotatable, extensible sideways by 300 mm
Hydraulic pivoting draw bar with 2 cylinders	•
Pivoting moment (at 200 bar)	35 kNm
Maximum excursion from centre	+/- 37° / +/- 860 mm
Draw bar tilting / suspension system	○
Load capacity on non-public roads	15.0 t
Permitted total weight on public roads	16.0 t
Dead weight (depending on additional equipment)	approx. 5.5 t
Draw bar, bottom hitch	•
Ball head hitch K80	•
Bogie axle swing travel	+/- 180 mm
Braking system	4-wheel pneumatic braking system with spring loading
Brake area	406x120, 10-hole rim
Tyres	600/50-22.5" 12 PR, stud profile
TÜV certification 25 km/h	•
A-column support (with large outrigger plates)	•
Loading crane	LK 7185
Reach	8,300 mm
Lift moment net	70 kNm
Pivoting moment	21.5 kNm
Crane control	8-way EHC control with two joysticks
Pm 270 - Double clam shell gripper	•
Pendulum with internally laid concealed hoses	•
Hydraulic oil cooler with electric fan	•
Independent oil supply with fixed pump (130 ltr., 200 bar)	•
Total price	88,300 €

On this page you can find optional accessories suitable for the logLINE forwarding trailer L16.
You will find images, technical information and further explanations on the accessory options on the previous pages.

Category	Name	Order no.	Price
Tyres	560/45-22.5" tyres (reduced price)	R.560.1043	./ 1,620 €
	Tyres 700/40-22.5" BKT flotation 648	R.700.1085	800 €
Brake system	Combination brake 4-wheel pneumatic and hydraulic 4-wheel brake (surcharge)	VS.KOB444	1,940 €
Hitch	without ball head suspension K80 for forwarding trailer	VS.KU80	./ 440 €
	Draw bar tilting and suspension system		On request
Licensing	TÜV certificate 40 km/h incl. quick-change wheel cover. (surcharge instead of 25 km/h)	VS.TUEV40.1	860 €
Loading crane	Loading crane LK 6180 with 7,870 mm reach and 61 kNm (reduced price)	VS.KRAN6180	./ 7,400 €
	Loading crane LK 61100 with 9,780 mm reach and 61 kNm (reduced price)	VS.KRAN61100	./ 3,330 €
	Loading crane LK 71100 with 10,000 mm reach and 70 kNm (surcharge)	VS:KRAN71100	1,900 €
Oil supply	Independent oil supply with fixed load-sensing pump (117 ltr., 230 bar) (surcharge)	VS.EIGOEL117	2,020 €
Crane control	EHC control Danfoss 8-way Autec control panel (reduced price)	VS.EHC8KABEL	./ 390 €
	EHC control Danfoss 8-way Autec remote control panel (reduced price)	VS.EHC8FUNK	300 €
	Load sensing connection for Danfoss control block	VS.LOAD-SENSING CONNECTION	247 €
Gripper and rotator	Pfanzelt gripper Pm 230 (reduced price instead of Pm 270)	VS.PM230	./ 1,380 €
	Pfanzelt 4-finger gripper Pm 230 (reduced price instead of Pm 270)	VS.PM2304FING	./ 550 €
	Pfanzelt 4-finger gripper Pm 270 (surcharge)	VS.PM2704FING	930 €
	Pendulum with internal concealed hoses	VS.PSD	740 €
Miscellaneous	Hydraulic oil cooler with electric fan	VS.OELKUEHL	1,570 €
	Crane cable winch, hydraulically driven	VS.KSW	3,230 €
	Operating hour counter (crane operation)	VS.BSTDZ	350 €
	Trunk scraper on main boom	VS.STK	405 €
	High seat for loading crane	VS.HSLK	1,200 €
	H3 flood light in folding arm with flood light protection	VS.ARBEITSSCHEINH3KNICK	460 €
	LED flood light in folding arm with flood light protection	VS.ARBEITSSCHEINLEDKNICK	740 €
	Two H3 flood light on crane column with flood light protection	VS.ARBEITSSCHEINH3KRANSAEULE	760 €
Drive	Wheel hub drive on rear axle with oil supply from tractor	VS.RADNABENANTRIEB8LLOCHDW	18,300 €
	Wheel hub drive on rear axle via separate oil supply	VS.RADNABENANTRIEB8LLOCHEIG	18,300 €



The most important sales arguments:

- Unparalleled stability thanks to reinforced central spar frame
- Frame extension and sliding axles for optimum weight distribution combined with a high degree of load flexibility
- TÜV certificate with 25 and 40 km/h possible

Required tractor equipment:

- 1x 2-way valve for pivoting drawing bar
- 1x 1-way valve and pressureless return flow for crane control (not with independent oil supply)
- 1x two line pneumatic braking system

Technical specs

L19

Design	Central spar (350 x 250 x 8 mm)
Double walled in crane support zone	•
Long flat bed	4,500 - 6,500 mm
Frame extension	1,500 mm (mechanically extensible)
Fender frame as per UVV (accident prevention regulations)	•
Flat bed area	3.5 - 4.0 m ²
Stanchion pairs	4 pcs, insertable and rotatable, extensible sideways by 300 mm
Hydraulic pivoting draw bar with 2 cylinders	•
Pivoting moment (at 200 bar)	35 kNm
Maximum excursion from centre	+/- 37° / +/- 860 mm
Draw bar tilting / suspension system	○
Load capacity on non-public roads	17.0 t
Permitted total weight on public roads	19.0 t
Dead weight (depending on additional equipment) approx.	6.0 t
Draw bar, bottom hitch	•
Ball head hitch K80	•
Bogie axle swing travel	+/- 180 mm
Braking system	4-wheel pneumatic braking system with spring loading
Brake area	406x120, 10-hole rim
Tyres	600/50-22.5" 12 PR, stud profile
TÜV certification 25 km/h	•
A-column support (with large outrigger plates)	•

Loading crane

LK 7185

Reach	8,300 mm
Lift moment net	70 kNm
Pivoting moment	21.5 kNm
Crane control	8-way EHC control with two joysticks
Pm 270 - Double clam shell gripper	•
Pendulum with internally laid concealed hoses	•
Hydraulic oil cooler with electric fan	•
Independent oil supply with fixed pump (130 ltr., 200 bar)	•

Total price

92,400 €

On this page you can find optional accessories suitable for the logLINE forwarding trailer L19.
You will find images, technical information and further explanations on the accessory options on the previous pages.

Category	Name	Order no.	Price
Tyres	Tyres 700/40-22.5" BKT flotation 648	R.700.1085	600 €
Brake system	Combination brake 4-wheel pneumatic and hydraulic 4-wheel brake (surcharge)	VS.KOB444	1,940 €
Hitch	without ball head suspension K80 for forwarding trailer	VS.KU80	./ 440 €
	Draw bar tilting and suspension system		On request
Licensing	TÜV certificate 40 km/h incl. quick-change wheel cover. (surcharge instead of 25 km/h)	VS.TUEV40.1	860 €
Loading crane	Loading crane LK 6180 with 7,870 mm reach and 61 kNm (reduced price)	VS.KRAN6180	./ 7,400 €
	Loading crane LK 61100 with 9,780 mm reach and 61 kNm (reduced price)	VS.KRAN61100	./ 3,330 €
	Loading crane LK 71100 with 10,000 mm reach and 70 kNm (surcharge)	VS:KRAN71100	1,900 €
Oil supply	Independent oil supply with fixed load-sensing pump (117 ltr., 230 bar) (surcharge)	VS.EIGOEL117	2,020 €
Crane control	without EHC control Danfoss 8-way with 2 joysticks (reduced price)	VS.EHC8	./ 8,950 €
	EHC control Danfoss 8-way Autec control panel (reduced price)	VS.EHC8KABEL	./ 300 €
	EHC control Danfoss 8-way Autec remote control panel (reduced price)	VS.EHC8FUNK	300 €
	Load sensing connection for Danfoss control block	VS.LOAD-SENSING CONNECTION	247 €
Gripper and rotator	Pfanzelt gripper Pm 230 (reduced price instead of Pm 270)	VS.PM230	./ 1,380 €
	Pfanzelt 4-finger gripper Pm 230 (reduced price instead of Pm 270)	VS.PM2304FING	./ 550 €
	Pfanzelt 4-finger gripper Pm 270 (surcharge)	VS.PM2704FING	270 €
	Pendulum with internal concealed hoses	VS.PSD	740 €
Miscellaneous	Crane cable winch, hydraulically driven	VS.KSW	3,230 €
	Operating hour counter (crane operation)	VS.BSTDZ	350 €
	High seat for loading crane	VS.HSLK	1,200 €
	H3 flood light in folding arm with flood light protection	VS.ARBEITSSCHEINH3KNICK	460 €
	LED flood light in folding arm with flood light protection	VS.ARBEITSSCHEINLEDKNICK	740 €
	Two H3 flood light on crane column with flood light protection	VS.ARBEITSSCHEINH3KRANSAEULE	760 €
Drive	Wheel hub drive on rear axle with oil supply from tractor	VS.RADNABENANTRIEB8BLOCHDW	18,300 €
	Wheel hub drive on rear axle via separate oil supply	VS.RADNABENANTRIEB8BLOCHEIG	18,300 €



Generously dimensioned logging trailer for maximum performance.

Requirements to modern logging trailers vary greatly depending on the respective area of application. Pfanzelt offers the most extensive range of logging trailers on the market. As a result, users have the opportunity to configure a professional Pfanzelt logging trailer to suit their individual needs.

Technical specs ► Page 44

The following options for putting together a custom trailer are available with the module system

- Load-bearing capacity from 9 to 17 t
- Extensive range of professional cranes with up to 10 m reach in various lifting classes
- Oil supplied by tractor or by a separate oil supply featuring a high-quality axial-piston pump

Technical details that impress:

- Central-spar frame for maximum stability
- Frame extension and sliding axle for best weight distribution combined with great load flexibility
- Licensed for public roads for 25 and 40 km/h
- Powerful loading cranes made for professionals with a reach of up to 10 metres and a hoisting force of 7 m/t with a rapid traverse valve for even faster telescopic extension
- A-column or H-column stabilisers for optimum parking stability even in difficult terrain
- Workplace with clear all-round view due to the location the operating panel on the draw bar or the side-mounted high seat
- Large range of accessories for forestry professionals



HERGESTELLT IN DEUTSCHLAND

Tested quality:



5.1 Profi forwarding trailers – technical specs

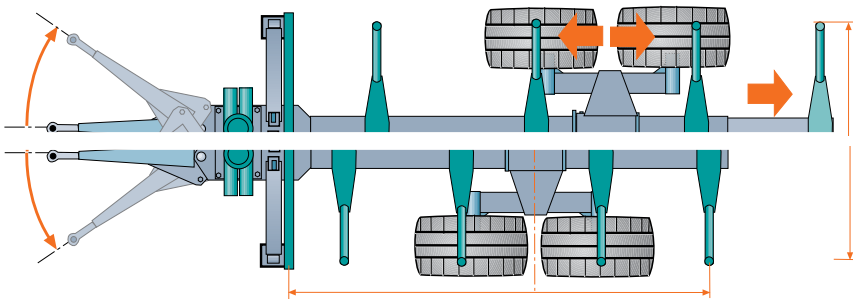


Frame

The strong frame structure which is based on a torsion-resistant central spar is the basis for the excellent off-road handling properties of the Pfanzelt forwarding trailer, even when loaded. The central spar is made of fine grain steels to cope with the highest loads. Besides maximum stability, this design offers maximum ground clearance. The frame is only welded to the crane support in the front area, meaning that the strength of the central spar is not compromised.

The central spar has a double wall in the crane mounting plate area to provide the forwarding trailer with additional strength for heavy crane attachments. A second spar is carefully welded to the central spar to exacting technical standards.

Standard



Sliding axle

The flat bed can be extended by up to 2,000 mm for the transport of various timber lengths by means of an integrated, extensible frame.

The greatest possible flexibility for loading of the forwarding trailer is also assured by the stanchions whose position can be changed by sliding them along the central spar and the axle bogie. The operator thus has the option to optimally adjust the stanchion size to various fixed lengths. By sliding the axle bogie, heavy loads can be precisely adjusted to the tractor type, thus avoiding the drawbar load being exceeded and also preventing a negative drawbar load.



Standard

Bogie axle

The bogie axle of Pfanzelt forwarding trailers offers stability during crane operation and the best possible drive characteristics, especially in forwarding trails. The large pendulum travel of the bogie axle has a range of up to 394 mm. This enables that the trailer can safely drive over branches and other obstacles.

The even distribution of the ground pressure is another big advantage.

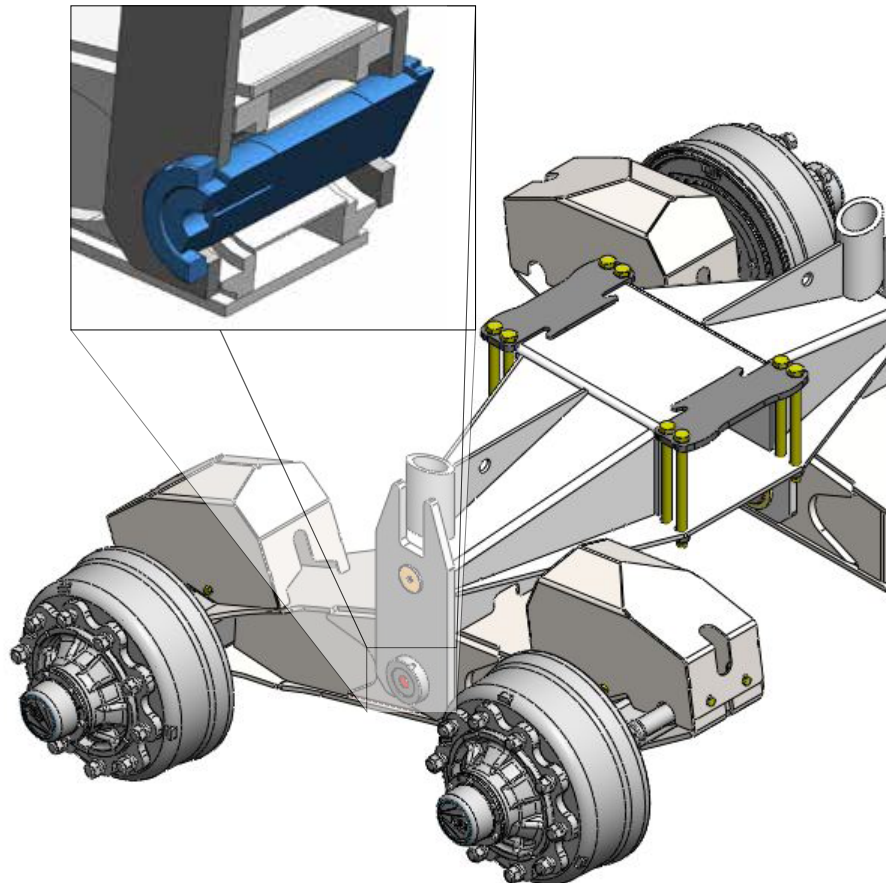
For protection against damage due to driving over trunks and projecting branches, the underside of the trailer is smooth. Cables and hoses are concealed for maximum protection.



Standard

Bearings

The bogie axle is mounted on lubricatable and adjustable spherical articulated bearings. This guarantees true running for many years.



Standard



Steerable draw bar

Pfanzelt forwarding trailers are equipped as standard with a pivoting draw bar with a large steering angle. The maximum excursion from the centre is +/- 750 mm. Two powerful hydraulic cylinders that can be operated from the tractor cab, even when the assembly is in motion, facilitate operation even when the laden forwarding trailer is turned against the slope. The pivoting moment is thus 23.6 kNm (at an oil pressure of 200 bar).

The steerable draw bar can be mechanically locked when driving on roads. The draw bar is locked by means of a one-man system with two protective flaps.

Standard



Hitch

The draw bar of the Profi forwarding trailer is available in both top- and bottom-hitched versions. The bearings of the pivoting draw bar in the form of lubricatable and adjustable spherical articulated bearings ensure long-term operating safety of this component that is subject to heavy loading.

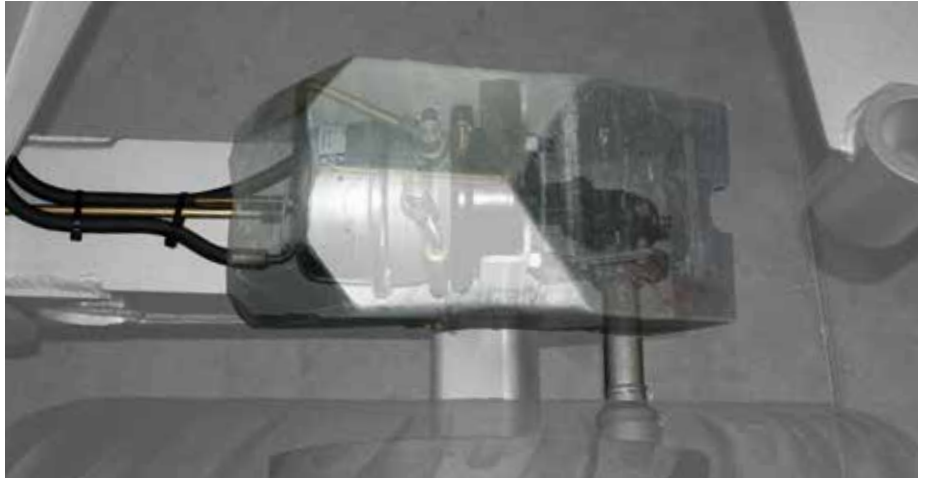
When the trailer is fitted with an independent hydraulic oil supply, the powerful piston pump is protected from damage by encapsulated mounting either above or below the draw bar.



Independent of forwarding trailer
- see accessory items

Brake systems

Pfanzelt Profi forwarding trailers are equipped as standard with a braking system that acts on four wheels. Depending on the trailer size, the braking system is available as a hydraulic or pneumatic system. The compact diaphragm brake cylinders are completely encapsulated with a protective hood. This means that the brake system is protected from damage by branches or the gripper.



Independent of forwarding trailer
- see accessory items

Permit for public roads

Travel on public roads is no problem for Pfanzelt machines, even when loaded. With the TÜV certificate, the forwarding trailer can be licensed for top speeds of 25 or 40 km/h on public roads.



Lighting

The lighting system using LED lights is integrated in the frame. To protect the lights when working in the forest, these can be folded in.



Standard

Tool box and holder

Chain saws and fuel canisters can be practically and neatly stowed on the forwarding trailer. An additional storage bin is ideally suited for lashing belts, tools and other small items.



Standard

Chain saw holder for retrofitting	59 €
Fuel canister holder for retrofitting	47 €
Tool box for retrofitting	450 €



Operating station and high seat

The Pfanzelt operating station mounted as standard on the draw bar provides a well organised work station outside the hazard zone with an optimum view for safety purposes of the loading crane and the surrounding area. The back rest of the platform and the hand guard over the control toggles optimize the operator's safety and ensure that he adopts an ergonomic working stance.

A high seat mounted on the side of the crane column, which rotates with the crane, is optionally available with nearly all Pfanzelt forestry cranes. The joy sticks are ergonomically mounted on both sides of the seat.

BS - control panel on the draw bar
 Standard
 Price for retrofitting 380 €

HSLK - High seat for loading crane
 1,200 €
 (surcharge instead of control panel)



Parking wheel for Profi forwarding trailer

Rapid attaching parking wheel that can be stowed for travel on front grille.

STUETZPR
 Standard for forwarding trailer without crane.

Hydraulic wheel hub drive

The new wheel hub drive built in-house by Pfanzelt combines all advantages in the forest and on road. In addition to excellent road handling properties, it can be fitted with chains for movement in standing timber.

The wheel hub drive is equipped as standard with an electrical control unit. The driver is thus able to comfortably control the drive from the tractor cab. This allows the operator to switch between the simple drive for forward travel and reversing which is automatically switched off during braking and an uphill assist function.

RADNABENANTRIEB6LOCHDW - Wheel hub drive on rear axle with oil supply from tractor

- Radial piston motor for 2 hydraulically drive wheels incl. free running for 6-hole rim BB4
- Drive via tractor PTO (1 single way control unit, unpressurised return flow) with 3/2 way valves and tractor-mounted control unit
- Functions of the control unit: Enabled with brake actuated or when pressure drops, uphill assist function, crane mode / travel mode changeover valve
- Drive power: 1.0 t, 7.8 km/h 200 bar, 80 ltr.

16,700 €

RADNABENANTRIEB6LOCHEIG - Wheel hub drive on rear axle via separate oil supply

- Radial piston motor for 2 hydraulically drive wheels incl. free running for 6-hole rim BB4
- Drive via independent oil supply 300 bar, 80 l/min (not included in price) with 3/2 valve and control unit mounted in tractor
- Functions of the control unit: Enabled with brake actuated or when pressure drops, uphill assist function, crane mode / travel mode changeover valve
- Drive power: 1.8 t, 7.5 km/h 300 bar, 80 ltr.

16,700 €

RADNABENANTRIEB8LOCHDW - Wheel hub drive on rear axle with oil supply from tractor

Technical specs see above – version for 8-hole rim

18,300 €

RADNABENANTRIEB8LOCHEIG - Wheel hub drive on rear axle via separate oil supply

Technical specs see above – version for 8-hole rim

18,300 €

Thrust and speed depend on tyre type!





Hydromechanical drive

If the friction drive is not enough, Pfanzelt also offers direct hydromechanical drive on an NAF axle bogie. This drive unit is based on a hydraulic motor that can either be driven via the tractor hydraulics or an independent hydraulic oil supply. The advantage of this system is a reliable and responsive force transmission to all four wheels. The available thrust is up to 4 tonnes.

On request



Friction drive

The drive system with friction drive consists of a special axle system with a mounting cradle that is fitted with two hydraulic motors. The hydraulic motors drive two star-form friction rollers that, if necessary, are hydraulically pressed into the tire treads. This system can transmit a thrust of 3 tonnes.

On request

Transport systems

The high-sided floor pan for cut material is suitable for the transport of light brush and treetop material, while the standard floor pan is ideal for the combined transport of branches and trunks. If this is permanently mounted on the vehicle, this protects the tyres from damage by the gripper.



BHW* - Cut material floor pan (installation height up to top edge of stanchions) for branch material (length approx. 3800 mm)

BW* - floor pan (installation height up to second stanchion radius) for the combined transport of branch material and trunks (length approx. 4000 mm)



WOODZIPPER

The new and economical loading and transport system for forwarding trailers facilitates two different work processes. The compacted wood fuel – branches, tree tops or wood fuel from short cycle plantations – stacked on the woodZIPPER with two hydraulically actuated clamping stanchions – increases the material quantity per trip by around a third. The second design role is the transport of short timber. When working in sloped forestry tracks, the stacked short timber can be pushed to the upper side of the slope. This means that the track can be used longer and less damage is caused to the ground.



Price on request



LP - loading platform (not illustrated)
Dimensions:
Width 2.10 m, length 4.50 m
LPKIPP - Loading platform tiltable at tail
end with two cylinders
Dimensions:
Width 2.10 m, length 4.50 m

Independent of forwarding trailer
- see accessory items



5.2 Profi forwarding trailer - the most important feature



Power link system – toggle lever control – guarantees manoeuvrable crane operation, greater reach and more lifting power.



A carefully conceived system of **concealed hoses** over the entire crane minimises downtime.



The mounting of all positive locking bolts in lubricatable **bronze bushes** maximises maintenance intervals and ensures stability under pressure.



The crane is rated according to **crane loading class B4** for permanent dynamic loading.



Protected from damage during loading operations, the main boom cylinder is installed on the **top side of the boom**.



Rotary transmissions maximise the functional safety and service life of the hydraulic hoses.



Massive and robust **front grilles** for optimum safety during crane operation and when driving on public roads.



The hydraulic hoses are run in a **hose shaft** to protect the user at the operating console.



Ergonomic operation via two mechanical joysticks or control panel for cable and wireless control.



Pressure gauge for monitoring the operating pressure of the hydraulic system during crane operation.



The large **oil supply tank** is installed so as to protect it from damage and prevent impairment of the field of vision.



The especially robust and powerful **four cylinder slewing gear** made of cast metal with a high pivoting moment.



Operating console with non-slip standing plate, ladder and back support for optimum working safety.

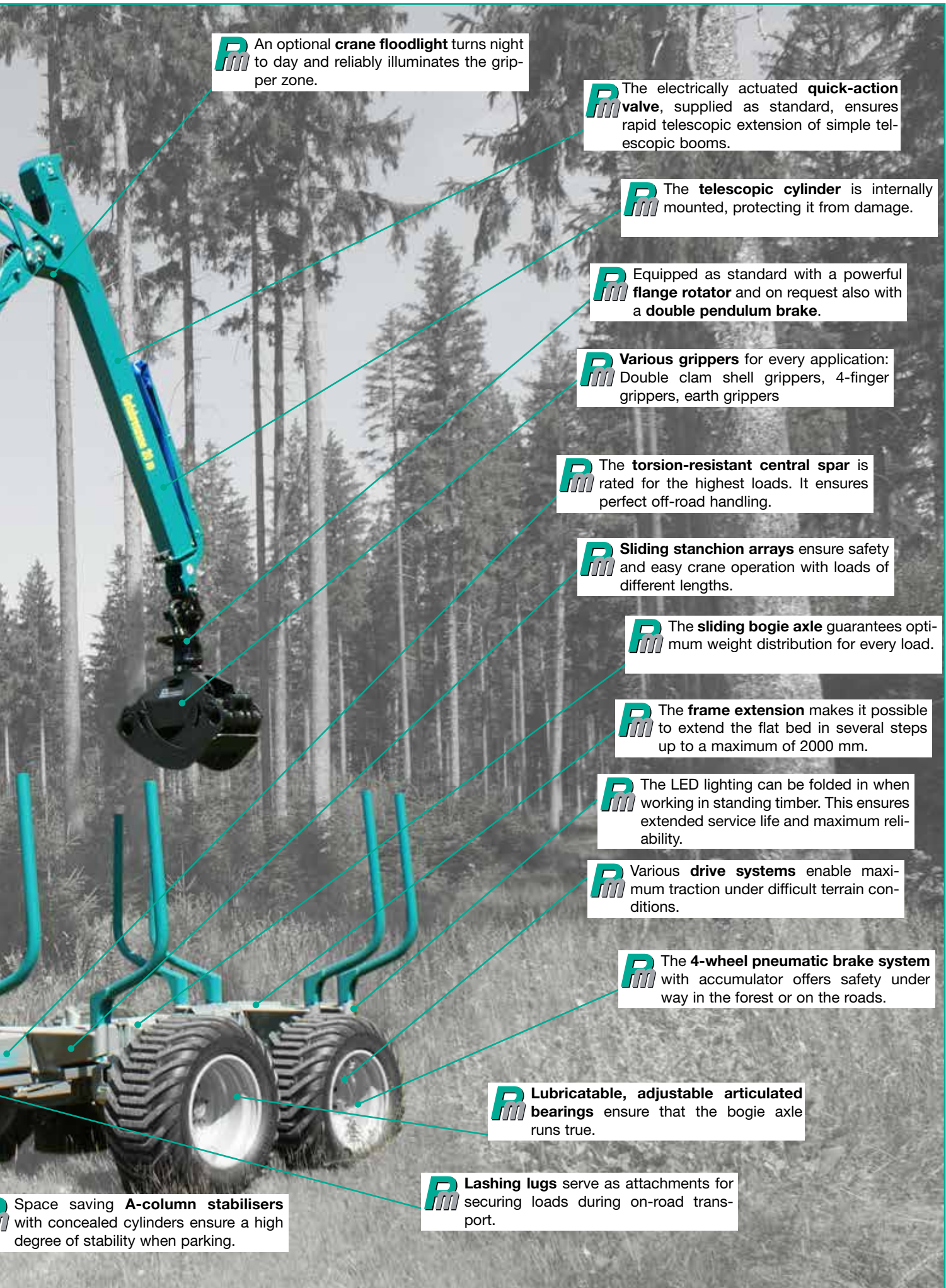


Steerable draw bar for top and bottom attachment with protected piston pump mounted on or under the draw bar.



A **one-man system** for **mechanically locking** the steerable draw bar when driving on public roads.





R An optional **crane floodlight** turns night to day and reliably illuminates the gripper zone.

R The electrically actuated **quick-action valve**, supplied as standard, ensures rapid telescopic extension of simple telescopic booms.

R The **telescopic cylinder** is internally mounted, protecting it from damage.

R Equipped as standard with a powerful **flange rotator** and on request also with a **double pendulum brake**.

R Various **grippers** for every application: Double clam shell grippers, 4-finger grippers, earth grippers

R The **torsion-resistant central spar** is rated for the highest loads. It ensures perfect off-road handling.

R **Sliding stanchion arrays** ensure safety and easy crane operation with loads of different lengths.

R The **sliding bogie axle** guarantees optimum weight distribution for every load.

R The **frame extension** makes it possible to extend the flat bed in several steps up to a maximum of 2000 mm.

R The LED lighting can be folded in when working in standing timber. This ensures extended service life and maximum reliability.

R Various **drive systems** enable maximum traction under difficult terrain conditions.

R The **4-wheel pneumatic brake system** with accumulator offers safety under way in the forest or on the roads.

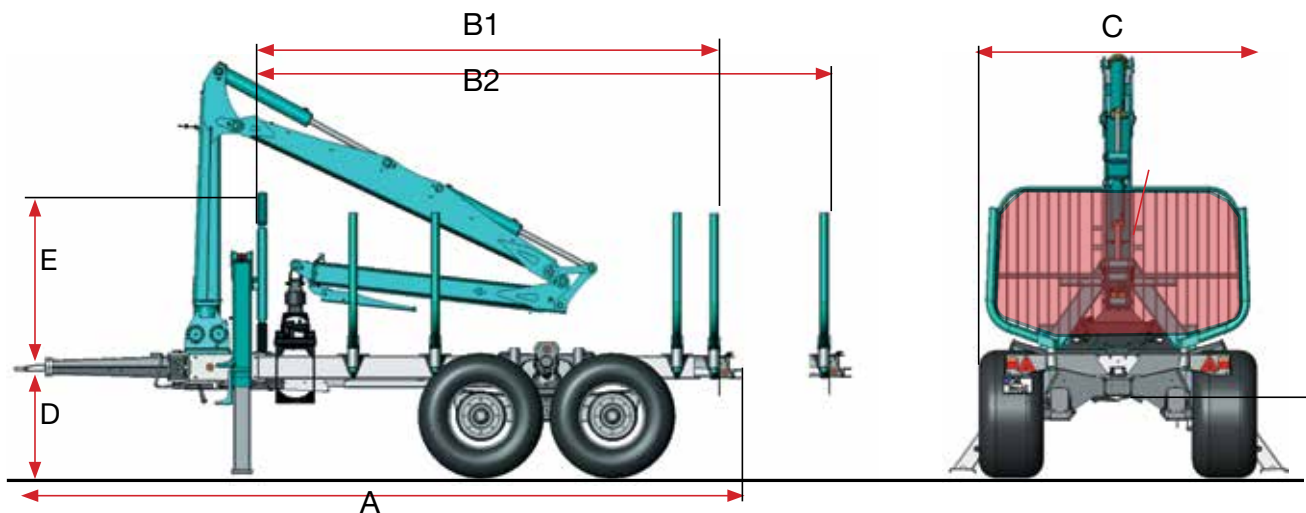
R **Lubricatable, adjustable articulated bearings** ensure that the bogie axle runs true.

R **Lashing lugs** serve as attachments for securing loads during on-road transport.

R Space saving **A-column stabilisers** with concealed cylinders ensure a high degree of stability when parking.

Forwarding trailer	P11	P13	P15	P17
Design specs				
Frame structure	central spar frame			
Central spar sizes	200 x 200 x10 mm	200 x 200x10 mm	200 x 200 x 10 mm	300 x 200 x 10 mm
Bogie axle	•	•	•	•
Double walled in crane base zone	-	•	•	•
Frame extension 2,000 mm (mechanically extensible)	•	•	•	•
Collision fender as per UVV	•	•	•	•
Front safety grille area	2.12 m ²	2.38 m ²	2.87 m ²	3.52 m ²
Hydraulic pivoting draw bar with 2 cylinders	•	•	•	•
Equipment				
Stanchion pairs	4	4	4	4
Load capacity on non-public roads	9 t	11 t	13 t	15 t
Permitted total weight on public roads	11 t	13 t	15 t	17 t
Dead weight with crane	approx. 2.5 t	approx. 2.9 t	approx. 3.6 t	approx. 3.9 t
Lighting	as per StVZO, integrated in frame, retractable			
TÜV certificate 25 km/h / 40 km/h	o/o	•/o	•/o	•/o
Operating station on draw bar	•	•	•	•
Brake system	hydraulic 4-wheel pneumatic brake system		4-wheel brake system	
Brake surface	300 x 90 mm, 8-hole rim		406 x 120 mm, 10-hole rim	
Tyres				
Dimensions	380/55-17" 14 PR groove tread	480/45-17" 14 PR groove tread	500/45-22.5" 12 PR stud tread	600/50-22.5" 12 PR stud tread
Rim with valve protection	•	•	-	-
Rim flange reinforcement, spar sleeve protection	-	-	•	•
Loading crane				
	LK 4167	LK 4272	LK 5180	LK 51100
Reach	6,600 mm	7,140 mm	8,000 mm	10,000 mm
Lift moment net	41 kNm	40.5 kNm	51 kNm	51 kNm
Pivoting moment	15.2 kNm	15.2 kNm	21.5 kNm	21.5 kNm
Crane control	8-way mechanical, 2 control toggles, 2 electrical functions (rocker) for gripper and telescope			
Pm 230 - Double clam shell gripper	•	•	•	•

	P11	P13	P15	P17
A [mm] Length in transport position	6.000	6.000	6.000	6.300
B1 [mm] Loading length retracted	3,800	3,800	3,800	4,500
B2 Loading length extended	5,800	5,900	5,900	6,500
C [mm] Width (tyres)				
380/55-17	1,930	1,930		
480/45-17	2,100	2,100		
400/60-15.5	1,870	1,870		
500/45-22.5	2,120	2,350		
520/50-17	2,140	2,140		
560/45-22.5		2,180	2,410	2,510
600/50-22.5			2,490	2,550
D [mm] Height of hitching eye				
380/55-17	790			
480/45-17	825	825		
400/60-15.5	805	805		
520/50-17	840	840		
500/45-22.5			960	
560/45-22.5			1,010	
600/50-22.5			1,060	1,060
D [mm] Height over hitching eye	1,250	1,250	1,400	1,600
F [mm] Ground clearance				
380/55-17	565			
480/45-17	610	610		
400/60-15.5	580	580		
520/50-17	630	630		
500/45-22.5			635	
560/45-22.5			690	
600/50-22.5			730	730
G [m ²] Front grille area	2.12	2.37	2.94	3.52
Operating weight* [kg] with following cranes (type)				
4167	2,550	2,850		
4177	2,650	2,950		
5167		3,120		
5180	3,160	3,635	3,835	
51100	3,250	3,750	3,950	



The P11 forwarding trailer with 9.0 t load capacity is the entry level model in the Pfanzelt Profi forwarding trailer range. With its very low dead weight, the forwarding trailer is ideal for small tractor units. Loading cranes with reaches up to 10 metres with various lifting capacities are available for installation that can be equipped with double clam shell grippers or 4-finger grippers.



Illustration may vary from original.

The most important sales arguments:

- Unparalleled stability thanks to central spar frame
- Frame extension and sliding axles for optimum weight distribution combined with a high degree of load flexibility
- Powerful professional crane with fast action valve for even quicker telescopic extension
- TÜV certificate with 25 and 40 km/h possible

Required tractor equipment:

- 1x one-way valve for hydraulic brake
- 1x 2-way valve for pivoting drawing bar
- 1x 1-way valve and pressureless return flow for crane control (not with independent oil supply)

Technical specs

P11

Design	Central spar (200 x 200 x 10 mm)
Double walled in crane support zone	•
Long flat bed	3,800 - 5,900 mm
Frame extension	2,000 mm (mechanically extensible)
Fender frame as per UVV	•
Loading cross section	max. 2.12 m ²
Stanchion pairs	4 pcs (5 mounting holes), insertable and rotatable
Hydraulic pivoting draw bar with 2 cylinders	•
Pivoting moment (at 200 bar)	15.4 kNm
Maximum excursion from centre	+/- 34° / +/- 750 mm
Load capacity on non-public roads	9.0 t
Permitted total weight on public roads	11.0 t
Dead weight (depending on additional equipment)	approx. 2.5 t
Bogie axle swing travel	+/- 212 mm
Brake system	Hydraulic 4-wheel braking system
Braking area	300x90 mm, 8-hole wheel
Tyres	380/55-17" 14 PR, grooved tread, valve protection
Operating station on draw bar	•
A-column outrigger	•
Hitch	top hitch/ drawing lug
Loading crane	LK 4167
Reach	6,600 mm
Lift moment net	41 kNm
Pivoting moment	15.2 kNm
Crane control	8-way mechanical, 2 control toggles with 2 electrical functions for gripper and telescope
Pm 230 - Double clam shell gripper	•
Total price	29,300 €

On this page you can find optional accessories suitable for the Profi forwarding trailer P11. You will find images, technical information and further explanations on the accessory options on the previous pages.

Category	Name	Order no.	Price
Tyres	Tyres 400/60-15.5" 14 PR, stud profile (surcharge) ► p. 74	R.400.1103	500 €
	Tyres 480/45-17.0" 14 PR, stud profile (surcharge) ► p. 74	R.480.1035	1,290 €
	Tyres 520/50-17", groove profile (surcharge) ► p. 74	R.520.1013	2,190 €
	Tyres 520/50-17" 159B, forestry wheel (surcharge) ► p. 74	R.520.1015	2,780 €
Brake system	Compressed air braking systems acting on all 4 wheels	VS.DLB4	1,900 €
	Combination brake 4-wheel pneumatic and hydraulic 4-wheel brake	VS.KOB444	3,040 €
Hitch	Draw bar hitch bottom for forwarding trailer	VS.DURWP11	410 €
	Ball head suspension K80 for forwarding trailer	VS.KU80	440 €
Forwarding trailer add-ons	Stanchion pair with carrier for forwarding trailer	VS.RMT1	890 €
	Stanchion pair without carrier for forwarding trailer	VS.ROT1	610 €
	Loading platform 2.10 m wide, approx. 4.50 m long	VS.LP	6,900 €
	Loading platform can also be tilted with 2 cylinders (surcharge to LP)	VS.LPKIPP	4,450 €
	Cut material floor pan (installation height up to stanchion top edge)	VS.BHWRWP11	2,330 €
	Floor pan (installation height up to second stanchion radius)	VS.BWRWP11	2,330 €
	Stanchion extension (1 set = 8 pcs) 200 mm	VS.RV	340 €
Licensing	TÜV certificate 25 km/h (TÜV certificate only possible in conjunction with pneumatic brake system)	VS.TUEV25.1	650 €
	TÜV certificate 40 km/h incl. quick replacement wheel cover (TÜV certificate only possible in conjunction with pneumatic brake system)	VS.TUEV40.1	1,520 €
Loading cranes	Loading crane LK 4177 with 7,200 mm reach and 40.5 kNm (surcharge)	VS.KRAN4177	1,960 €
Independent hydraulic oil circuit	Independent oil supply with fixed PTO mounted pump (108 ltr., 200 bar)	VS.EIGOEL108	3,530 €
	Independent oil supply with fixed piston pump (108 ltr., 200 bar)	VS.EIGOEL108FEST	3,880 €
	Independent oil supply with fixed load-sensing pump (117 ltr., 230 bar)	VS.EIGOEL117	6,250 €
Crane control	EHC control Danfoss 8-way Autec control panel	VS.EHC8KABEL	8,560 €
	EHC control Danfoss 8-way Autec remote control panel	VS.EHC8FUNK	9,250 €
	EHC control Danfoss 8-way with 2 joysticks	VS.EHC8	8,950 €
	Load sensing connection for Danfoss control block	VS.LOAD-SENSING CONNECTION	247 €
Stabilisers	Outrigger plates, size 300 x 300 mm (pair)	VS.ASTG	340 €
Gripper and rotator	Pfanzelt 4-finger gripper Pm 230 (surcharge instead of Pm 230)	VS.PM2304FING	830 €
	Pendulum with internal concealed hoses	VS.PSD1	740 €
Miscellaneous	Hydraulic oil cooler with electric fan	VS.OELKUEHL	1,570 €
	Crane cable winch, hydraulically driven	VS.KSW	3,230 €
	Operating hour counter (crane operation)	VS.BSTDZ	350 €
	Trunk scraper on main boom	VS.STK	405 €
	High seat for loading crane	VS.HSLK	1,200 €
	H3 flood light in folding arm with flood light protection	VS.ARBEITSSCHEINH3KNICK	460 €
	LED flood light in folding arm with flood light protection	VS.ARBEITSSCHEINLEDKNICK	740 €
	Two H3 flood light on crane column with flood light protection	VS.ARBEITSSCHEINH3KRANSAEULE	760 €
Drive	Wheel hub drive on rear axle with oil supply from tractor	VS.RADNABENANTRIEBBL0CHDW	16,700 €
	Wheel hub drive on rear axle via separate oil supply	VS.RADNABENANTRIEBBL0CHEIG	16,700 €

The P13 forwarding trailers are characterized by high performance with 11 t load capacity combined with compact dimensions and are thus ideal machines for working in dense standing timber. The frame extension in combination with sliding axle enables optimum weight distribution with great load flexibility. Loading cranes with reaches up to 10 metres with various lifting capacities are available for installation that can be equipped with double clam shell grippers or 4-finger grippers.



Illustration may vary from original.

The most important sales arguments:

- Unparalleled stability thanks to central spar frame
- Frame extension and sliding axles for optimum weight distribution combined with a high degree of load flexibility
- Powerful professional crane with fast action valve for even quicker telescopic extension
- TÜV certificate with 25 and 40 km/h possible

Required tractor equipment:

- 1x one-way valve for hydraulic brake
- 1x 2-way valve for pivoting drawing bar
- 1x 1-way valve and pressureless return flow for crane control (not with independent oil supply)

Technical specs

P13

Design	Central spar (200 x 200 x 10 mm)
Double walled in crane support zone	•
Long flat bed	3,800 - 5,900 mm
Frame extension	2,000 mm (mechanically extensible)
Fender frame as per UVV	•
Loading cross section	max. 2.38 m ²
Stanchion pairs	4 pcs (5 mounting holes), insertable and rotatable
Hydraulic pivoting draw bar with 2 cylinders	•
Pivoting moment (at 200 bar)	15.4 kNm
Maximum excursion from centre	+/- 34° / +/- 750 mm
Load capacity on non-public roads	11.0 t
Permitted total weight on public roads	13.0 t
Dead weight (depending on additional equipment) approx.	2.9 t
Bogie axle swing travel	+/- 212 mm
Braking system	4-wheel pneumatic braking system with spring-loading
Brake area	300 x 90 mm, 8-hole wheel
Tyres	480/45-17" 14 PR, grooved tread, valve protection
TÜV certification 25 km/h	•
Operating station on draw bar	•
A-column outrigger	•
Hitch	Top hitch/drawing lug
Loading crane	LK 4272
Reach	7,140 mm
Lift moment net	40.5 kNm
Pivoting moment	15.2 kNm
Crane control	8-way mechanical, 2 control toggles with 2 electrical functions for gripper and telescope
Pm 230 - Double clam shell gripper	•
Total price	38,300 €

On this page you can find optional accessories suitable for the Profi forwarding trailer P13.
You will find images, technical information and further explanations on the accessory options on the previous pages.

Category	Name	Order no.	Price
Tyres	Tyres 500/45-22.5" 12 PR, stud profile (surcharge) ► p. 74	R.BER5004522.5	3,110 €
	Tyres 520/50-17", groove profile (surcharge) ► p. 74	R.520.1013	1,100 €
	Tyres 520/50-17" 159B, forestry wheel (surcharge) ► p. 74	R.520.1015	1,680 €
	Tyres 560/45-22.5" Trelleborg T404 (surcharge) ► p. 74	R.560.1082	3,760 €
Brake system	Combination brake 4-wheel pneumatic and hydraulic 2-wheel brake	VS.KOB424	970 €
	Combination brake 4-wheel pneumatic and hydraulic 4-wheel brake	VS.KOB444	1,970 €
Hitch	Draw bar hitch bottom for forwarding trailer	VS.DURWP11	410 €
	Ball head suspension K80 for forwarding trailer	VS.KU80	440 €
Forwarding trailer add-ons	Stanchion pair with carrier for forwarding trailer	VS.RMT2	1,040 €
	Stanchion pair without carrier for forwarding trailer	VS.ROT2	610 €
	Loading platform 2.10 m wide, approx. 4.50 m long	VS.LP	6,900 €
	Loading platform can also be tilted with 2 cylinders (surcharge to LP)	VS.LPKIPP	4,450 €
	Cut material floor pan (installation height up to stanchion top edge)	VS.BHWRWP11	2,660 €
	Floor pan (installation height up to second stanchion radius)	VS.BWRWP11	2,660 €
	Stanchion extension (1 set = 8 pcs) 200 mm	VS.RV	340 €
Licensing	TÜV certificate 40 km/h incl. quick change wheel cover (surcharge instead of 25 km/h)	VS.TUEV40.1	860 €
Loading cranes	without loading crane LK 4272	VS.KRAN4272HOCH	./ 14,930 €
	Loading crane LK 4280 with 7,850 mm reach (surcharge)	VS.KRAN4280	2,130 €
	Loading crane LK 5280 with 7,800 mm reach and 50 kNm (surcharge)	VS.KRAN5280	6,220 €
Independent hydraulic oil circuit	Independent oil supply with fixed PTO mounted pump (108 ltr., 200 bar)	VS.EIGOEL108	3,530 €
	Independent oil supply with fixed piston pump (108 ltr., 200 bar)	VS.EIGOEL108FEST	3,880 €
	Independent oil supply with fixed load-sensing pump (117 ltr., 230 bar)	VS.EIGOEL117	6,250 €
Crane control	EHC control Danfoss 8-way Autec control panel	VS.EHC8KABEL	8,560 €
	EHC control Danfoss 8-way Autec remote control panel	VS.EHC8FUNK	9,250 €
	EHC control Danfoss 8-way with 2 joysticks	VS.EHC8	8,950 €
	Load sensing connection for Danfoss control block	VS.LOAD-SENSING CONNECTION	247 €
Stabilisers	without telescope stabiliser A-form	VS.TA	./ 2,350 €
	Outrigger plates, size 300 x 300 mm (pair)	VS.ASTG	340 €
Gripper and rotator	Pfanzelt 4-finger gripper Pm 230 (surcharge instead of Pm 230)	VS.PM2304FING	830 €
	Pendulum with internal concealed hoses	VS.PSD1	740 €
Miscellaneous	Hydraulic oil cooler with electric fan	VS.OELKUEHL	1,570 €
	Crane cable winch, hydraulically driven	VS.KSW	3,230 €
	Operating hour counter (crane operation)	VS.BSTDZ	350 €
	Trunk scraper on main boom	VS.STK	405 €
	High seat for loading crane	VS.HSLK	1,200 €
	H3 flood light in folding arm with flood light protection	VS.ARBEITSSCHEINH3KNICK	460 €
	LED flood light in folding arm with flood light protection	VS.ARBEITSSCHEINLEDKNICK	740 €
	Two H3 flood light on crane column with flood light protection	VS.ARBEITSSCHEINH3KRAN-SAEULE	760 €
Drive	Wheel hub drive on rear axle with oil supply from tractor	VS.RADNABENANTRIEB6LOCHDW	16,700 €
	Wheel hub drive on rear axle via separate oil supply	VS.RADNABENANTRIEB6LOCHHEIG	16,700 €



Illustration may vary from original.

The robust P15 Profi forwarding trailer is designed for the demanding forestry professional and is also available with the Pfanzelt friction drive. The forwarding trailer with a 13.0 t load capacity offers a high load bearing capacity with low dead weight for operations in standing timber. Loading cranes with reaches up to 10 metres with various lifting capacities are available for installation that can be equipped with double clam shell grippers or 4-finger grippers.

The most important sales arguments:

- Optimum performance/weight ratio for demanding forwarding work
- Frame extension and sliding axles for optimum weight distribution combined with a high degree of load flexibility
- Powerful professional crane with fast action valve for even quicker telescopic extension
- TÜV certificate with 25 and 40 km/h possible

Required tractor equipment:

- 1x 2-way valve for pivoting drawing bar
- 1x 1-way valve and pressureless return flow for crane control (not with independent oil supply)
- 1x two line pneumatic braking system

Technical specs

P15

Design	Central spar (200 x 200 x 10 mm)
Double walled in crane support zone	•
Long flat bed	3,800 - 5,900 mm
Frame extension	2,000 mm (mechanically extensible)
Fender frame as per UVV	•
Loading cross section	max. 2.87 m ²
Stanchion pairs	4 pcs (5 mounting holes), insertable and rotatable
Hydraulic pivoting draw bar with 2 cylinders	•
Pivoting moment (at 200 bar)	23.6 kNm
Maximum excursion from centre	+/- 34° / +/- 750 mm
Load capacity on non-public roads	13.0 t
Permitted total weight on public roads	15.0 t
Dead weight (depending on additional equipment) approx.	4.6 t
Bogie axle swing travel	+/- 197 mm
Brake system	4-wheel pneumatic brake system
Braking area	406x120 mm, 10-hole rim
Tyres	500/45-22.5" 12 PR, stud profile
TÜV certification 25 km/h	•
Operating station on draw bar	•
A-column outrigger	•
Hitch	Bottom hitch/drawing lug
Loading crane	LK 5180
Reach	8,000 mm
Lift moment net	51 kNm
Pivoting moment	21.5 kNm
Crane control	8-way mechanical with 2 electrical functions for gripper and telescope
Pm 230 - Double clam shell gripper	•
Total price	53,700 €

On this page you can find optional accessories suitable for the Profi forwarding trailer P15.
You will find images, technical information and further explanations on the accessory options on the previous pages.

Category	Name	Order no.	Price
Tyres	Tyres 560/45-22.5" 12 PR, stud profile, forestry wheel (surcharge) ► p. 74	R.560.1043	700 €
	Tyres 600/50-22.5" 12 PR, stud profile, forestry wheel (surcharge) ► p. 74	R.600.1048	2,280 €
Brake system	Combination brake 4-wheel pneumatic and hydraulic 4-wheel brake	VS.KOB444	1,970 €
Hitch	Draw bar hitch bottom for forwarding trailer	VS.DURWP11	410 €
	Ball head suspension K80 for forwarding trailer	VS.KU80	440 €
Forwarding trailer add-ons	Stanchion pair with carrier for forwarding trailer	VS.RMT3	1,160 €
	Stanchion pair without carrier for forwarding trailer	VS.ROT3	720 €
	Loading platform 2.10 m wide, approx. 4.50 m long	VS.LP	6,900 €
	Loading platform can also be tilted with 2 cylinders (surcharge to LP)	VS.LPKIPP	4,450 €
	Cut material floor pan (installation height up to stanchion top edge)	VS.BHWRWP11	2,660 €
	Floor pan (installation height up to second stanchion radius)	VS.BWRWP11	2,660 €
	Stanchion extension (1 set = 8 pcs) 200 mm	VS.RV	340 €
Licensing	TÜV certificate 40 km/h incl. quick change wheel cover (surcharge instead of 25 km/h)	VS.TUEV40.1	860 €
Loading cranes	without loading crane LK 5180	VS.KRAN5180	./ 21,150 €
	Loading crane LK 51100 with 10,000 mm reach and 51 kNm (surcharge)	VS.KRAN51100	3,780 €
	Loading crane LK 6180 with 7,870 mm reach and 61 kNm (surcharge)	VS.KRAN6180	1,880 €
	Loading crane LK 61100 with 9,780 mm reach and 61 kNm (reduced price)	VS.KRAN61100	5,950 €
Independent hydraulic oil circuit	Independent oil supply with fixed piston pump (108 ltr., 200 bar)	VS.EIGOEL108FEST	3,880 €
	Independent oil supply with fixed piston pump (130 ltr., 200 bar)	VS.EIGOEL130FEST	4,230 €
	Independent oil supply with fixed load-sensing pump (117 ltr., 230 bar)	VS.EIGOEL117	6,250 €
Crane control	EHC control Danfoss 8-way Autec control panel	VS.EHC8KABEL	8,560 €
	EHC control Danfoss 8-way Autec remote control panel	VS.EHC8FUNK	9,250 €
	EHC control Danfoss 8-way with 2 joysticks	VS.EHC8	8,950 €
	EHC control Danfoss 10-way (x6 proportional) valves with 2 joysticks	VS.EHC10	10,880 €
	Load sensing connection for Danfoss control block	VS.LOAD-SENSING CONNECTION	247 €
Stabilisers	without telescope stabiliser A-form	VS.TA	./ 2,350 €
	Telescopic outriggers H-form incl. 2 control valves (surcharge instead of A-form)	VS.TAH	5,750 €
	Outrigger plates, size 300 x 300 mm (pair)	VS.ASTG	340 €
Gripper and rotator	Pfanzelt 4-finger gripper Pm 230 (surcharge instead of Pm 230)	VS.PM2304FING	830 €
	Pendulum with internal concealed hoses	VS.PSD1	740 €
Miscellaneous	Hydraulic oil cooler with electric fan	VS.OELKUEHL	1,570 €
	Crane cable winch, hydraulically driven	VS.KSW	3,230 €
	Operating hour counter (crane operation)	VS.BSTDZ	350 €
	Trunk scraper on main boom	VS.STK	405 €
	High seat for loading crane	VS.HSLK	1,200 €
	H3 flood light in folding arm with flood light protection	VS.ARBEITSSCHEINH3KNICK	460 €
	LED flood light in folding arm with flood light protection	VS.ARBEITSSCHEINLEDKNICK	740 €
	Two H3 flood light on crane column with flood light protection	VS.ARBEITSSCHEINH3KRANSAEULE	760 €
Drive	Wheel hub drive on rear axle with oil supply from tractor	VS.RADNABENANTRIEBBLOCHDW	18,300 €
	Wheel hub drive on rear axle via separate oil supply	VS.RADNABENANTRIEBBLOCHDG	18,300 €
	Wheel drive hydraulic (friction drive) with pressure roller	VS.WD4	11,400 €
	2-way control block for operation of wheel drive	VS.SB2F	2,590 €



With its P17 Profi forwarding trailer, Pfanzelt has created a forwarding trailer with a very large loading volume and a high load capacity of 15 t. The expanded central spar is rated for the highest loads.

Illustration may vary from original.

The most important sales arguments:

- Unparalleled stability thanks to reinforced central spar frame
- Frame extension and sliding axles for optimum weight distribution combined with a high degree of load flexibility
- Powerful professional crane with fast action valve for even quicker telescopic extension
- TÜV certificate with 25 and 40 km/h possible

Required tractor equipment:

- 1x one-way valve for hydraulic brake
- 1x 2-way valve for pivoting drawing bar
- 1x 1-way valve and pressureless return flow for crane control (not with independent oil supply)
- 1x two line pneumatic braking system

Technical specs		P17
Design		Central spar (300 x 200 x 10 mm)
Double walled in crane support zone		•
Long flat bed		4,500 - 6,500 mm
Frame extension		2,000 mm (mechanically extensible)
Fender frame as per UVV		•
Flat bed area		3.52 m ²
Stanchion pairs		4 pcs (5 mounting holes), insertable and rotatable
Hydraulic pivoting draw bar with 2 cylinders		•
Pivoting moment (at 200 bar)		23.6 kNm
Maximum excursion from centre		+/- 34° / +/- 750 mm
Load capacity on non-public roads		15.0 t
Permitted total weight on public roads		17.0 t
Dead weight (depending on additional equipment) approx.		3.9 t
Draw bar, bottom hitch		•
Ball head hitch K80		•
Bogie axle swing travel		+/- 197 mm
Brake system		4-wheel pneumatic brake system
Braking area		406x120 mm, 10-hole rim
Tyres		600/50-22.5" 12 PR, stud profile
TÜV certification 25 km/h		•
Operating station on draw bar		•
A-column outrigger		•
Hitch		Bottom hitch/ K80
Loading crane		LK 51100
Reach		10,000 mm
Lift moment net		51 kNm
Pivoting moment		21.5 kNm
Crane control		8-way mechanical, 2 control toggles with 2 electrical functions for gripper and telescope
Pm 230 - Double clam shell gripper		•
Total price		63,900 €

On this page you can find optional accessories suitable for the Profi forwarding trailer 1780. You will find images, technical information and further explanations on the accessory options on the previous pages.

Category	Name	Order no.	Price
Tyres	Tyres 560/45-22.5" 12 PR, stud profile, forestry wheel (reduced price) ► p. 74	R.560.1043	./ 1,580 €
Brake system	Combination brake 4-wheel pneumatic and hydraulic 4-wheel brake	VS.KOB444	1,970 €
Hitch	Draw bar hitch at top instead of bottom (reduced price)	VS.DURWP11	./ 410 €
	without ball head suspension K80 for forwarding trailer	VS.KU80	./ 440 €
Forwarding trailer add-ons	Stanchion pair with carrier for forwarding trailer	VS.RMT4	1,200 €
	Stanchion pair without carrier for forwarding trailer	VS.ROT4	780 €
	Loading platform 2.10 m wide, approx. 4.50 m long	VS.LP	6,900 €
	Loading platform can also be tilted with 2 cylinders (surcharge to LP)	VS.LPKIPP	4,450 €
	Cut material floor pan (installation height up to stanchion top edge)	VS.BHWRWP11	2,850 €
	Floor pan (installation height up to second stanchion radius)	VS.BWRWP11	2,850 €
	Stanchion extension (1 set = 8 pcs) 200 mm	VS.RV	340 €
Licensing	TÜV certificate 40 km/h incl. quick change wheel cover (surcharge instead of 25 km/h)	VS.TUEV40.1	860 €
Loading cranes	without loading crane LK 51100	VS.KRAN51100	./ 24,930 €
	Loading crane LK 6180 with 7,870 mm reach and 61 kNm (reduced price)	VS.KRAN6180	./ 1,900 €
	Loading crane LK 61100 with 9,780 mm reach and 61 kNm (surcharge)	VS.KRAN61100	2,170 €
	Loading crane LK 7185 with 8,300 mm reach and 70 kNm (surcharge) ¹	VS.KRAN7185	11,420 €
Independent hydraulic oil circuit	Independent oil supply with fixed piston pump (108 ltr., 200 bar)	VS.EIGOEL108FEST	3,880 €
	Independent oil supply with fixed piston pump (130 ltr., 200 bar)	VS.EIGOEL130FEST	4,230 €
	Independent oil supply with fixed load-sensing pump (117 ltr., 230 bar)	VS.EIGOEL117	6,250 €
Crane control	EHC control Danfoss 8-way Autec control panel	VS.EHC8KABEL	8,560 €
	EHC control Danfoss 8-way Autec remote control panel	VS.EHC8FUNK	9,250 €
	EHC control Danfoss 8-way with 2 joysticks	VS.EHC8	8,950 €
	EHC control Danfoss 10-way (x6 proportional) valves with 2 joysticks	VS.EHC10	10,880 €
	Load sensing connection for Danfoss control block	VS.LOAD-SENSING CONNECTION	247 €
Stabilisers	without telescope stabiliser A-form	VS.TA	./ 2,350 €
	Telescopic outriggers H-form incl. 2 control valves (surcharge instead of A-form)	VS.TAH	5,750 €
	Outrigger plates, size 300 x 300 mm (pair)	VS.ASTG	340 €
Gripper and rotator	Pfanzelt gripper Pm 270 (surcharge instead of Pm 230)	VS.PM270	1,380 €
	Pfanzelt 4-finger gripper Pm 230 (surcharge instead of Pm 230)	VS.PM2304FING	830 €
	Pfanzelt 4-finger gripper Pm 270 (surcharge instead of Pm 230)	VS.PM2704FING	2,310 €
	Pendulum with internal concealed hoses	VS.PSD1	740 €
Miscellaneous	Hydraulic oil cooler with electric fan	VS.OELKUEHL	1,570 €
	Crane cable winch, hydraulically driven	VS.KSW	3,230 €
	Operating hour counter (crane operation)	VS.BSTDZ	350 €
	Trunk scraper on main boom	VS.STK	405 €
	High seat for loading crane	VS.HSLK	1,200 €
	H3 flood light in folding arm with flood light protection	VS.ARBEITSSCHEINH3KRAN-	460 €
	LED flood light in folding arm with flood light protection	VS.ARBEITSSCHEINLEDKNICK	740 €
	Two H3 flood light on crane column with flood light protection	VS.ARBEITSSCHEINH3KRAN-SAEULE	760 €
Drive	Wheel hub drive on rear axle with oil supply from tractor	VS.RADNABENANTRIEBBL0CHDW	18,300 €
	Wheel hub drive on rear axle via separate oil supply	VS.RADNABENANTRIEBBL0CHEIG	18,300 €
	Wheel drive hydraulic (friction drive) with pressure roller	VS.WD4	11,400 €
	2-way control block for operation of wheel drive	VS.SB2F	2,590 €

¹ Loading crane can only be operated with EHC crane control; this is not included in the scope of delivery. An H-column stabiliser is required for the operation of the loading crane.

The P13 forwarding trailers are characterized by high performance with 11 t load capacity combined with compact dimensions and are thus ideal machines for working in dense standing timber. The frame extension in combination with sliding axle enables optimum weight distribution with great load flexibility. Loading cranes with reaches up to 10 metres with various lifting capacities are available for installation that can be equipped with double clam shell grippers or 4-finger grippers.



Illustration may vary from original.

The most important sales arguments:

- Unparalleled stability thanks to central spar frame
- Frame extension and sliding axles for optimum weight distribution combined with a high degree of load flexibility
- Powerful professional crane with fast action valve for even quicker telescopic extension
- TÜV certificate with 25 and 40 km/h possible

Required tractor equipment:

- 1x one-way valve for hydraulic brake
- 1x 2-way valve for pivoting drawing bar
- 1x 1-way valve and pressureless return flow for crane control (not with independent oil supply)

Technical specs

P13 SPECIAL OFFER

Design	Central spar (200 x 200 x 10 mm)
Double walled in crane support zone	•
Long flat bed	3,800 - 5,900 mm
Frame extension	2,000 mm (mechanically extensible)
Fender frame as per UVV	•
Loading cross section	max. 2.38 m ²
Stanchion pairs	4 pcs (5 mounting holes), insertable and rotatable
Hydraulic pivoting draw bar with 2 cylinders	•
Pivoting moment (at 200 bar)	15.4 kNm
Maximum excursion from centre	+/- 34° / +/- 750 mm
Load capacity on non-public roads	11.0 t
Permitted total weight on public roads	13.0 t
Dead weight (depending on additional equipment) approx.	2.9 t
Bogie axle swing travel	+/- 212 mm
Braking system	4-wheel pneumatic braking system with spring-loading
Brake area	300 x 90 mm, 8-hole wheel
Tyres	480/45-17" 14 PR, grooved tread, valve protection
Operating station on draw bar	•
A-column outrigger	•
Hitch	Top hitch/drawing lug
Loading crane	LK 4272
Reach	7,140 mm
Lift moment net	40.5 kNm
Pivoting moment	15.2 kNm
Crane control	8-way mechanical, 2 control toggles with 2 electrical functions for gripper and telescope
Pm 230 - Double clam shell gripper	•
Total price	29,900 €

On this page you can find optional accessories suitable for the Profi forwarding trailer P13. You will find images, technical information and further explanations on the accessory options on the previous pages.

Category	Name	Order no.	Price
Tyres	Tyres 520/50-17", groove profile (surcharge) ► p. 74	R.520.1013	980 €
	Tyres 520/50-17" 159B, forestry wheel (surcharge) ► p. 74	R.520.1015	1,490 €
Brake system	Combination brake 4-wheel pneumatic and hydraulic 4-wheel brake	VS.KOB444	1,720 €
Hitch	Draw bar hitch bottom for forwarding trailer	VS.DURWP11	350 €
	Ball head suspension K80 for forwarding trailer	VS.KU80	390 €
Forwarding trailer add-ons	Stanchion pair with carrier for forwarding trailer	VS.RMT2	930 €
	Stanchion pair without carrier for forwarding trailer	VS.ROT2	530 €
	Loading platform 2.10 m wide, approx. 4.50 m long	VS.LP	6,150 €
	Loading platform can also be tilted with 2 cylinders (surcharge to LP)	VS.LPKIPP	3,950 €
	Cut material floor pan (installation height up to stanchion top edge)	VS.BHWRWP11	2,380 €
	Floor pan (installation height up to second stanchion radius)	VS.BWRWP11	2,380 €
	Stanchion extension (1 set = 8 pcs) 200 mm	VS.RV	310 €
Licensing	TÜV certificate 40 km/h incl. quick change wheel cover (surcharge instead of 25 km/h)	VS.TUEV40.1	855 €
Loading crane	Loading crane LK 4280 with 7,850 mm reach (surcharge)	VS.KRAN4280	1,890 €
	Loading crane LK 5280 with 7,800 mm reach and 50 kNm (surcharge)	VS.KRAN5280	5,450 €
Independent hydraulic oil circuit	Independent oil supply with fixed PTO mounted pump (108 ltr., 200 bar)	VS.EIGOEL108	3,130 €
	Independent oil supply with fixed piston pump (108 ltr., 200 bar)	VS.EIGOEL108FEST	3,440 €
	Independent oil supply with fixed load-sensing pump (117 ltr., 230 bar)	VS.EIGOEL117	5,400 €
Crane control	EHC control Danfoss 8-way Autec control panel	VS.EHC8KABEL	7,600 €
	EHC control Danfoss 8-way Autec remote control panel	VS.EHC8FUNK	8,200 €
	EHC control Danfoss 8-way with 2 joysticks	VS.EHC8	8,000 €
	Load sensing connection for Danfoss control block	VS.LOAD-SENSING CONNECTION	247 €
Stabilisers	Outrigger plates, size 300 x 300 mm (pair)	VS.ASTG	300 €
Gripper and rotator	Pfanzelt 4-finger gripper Pm 230 (surcharge instead of Pm 230)	VS.PM2304FING	770 €
	Pendulum with internal concealed hoses	VS.PSD1	660 €
Miscellaneous	Hydraulic oil cooler with electric fan	VS.OELKUEHL	1,390 €
	Crane cable winch, hydraulically driven	VS.KSW	2,910 €
	Operating hour counter (crane operation)	VS.BSTDZ	310 €
	Trunk scraper on main boom	VS.STK	360 €
	High seat for loading crane	VS.HSLK	940 €
	H3 flood light in folding arm with flood light protection	VS.ARBEITSSCHEINH3KNICK	410 €
	LED flood light in folding arm with flood light protection	VS.ARBEITSSCHEINLEDKNICK	815 €
	Two H3 flood light on crane column with flood light protection	VS.ARBEITSSCHEINH3KRAN-SAEULE	760 €
Drive	Wheel hub drive on rear axle with oil supply from tractor	VS.RADNABENANTRIEB6BLOCHDW	14,850 €
	Wheel hub drive on rear axle via separate oil supply	VS.RADNABENANTRIEB6LOCHHEIG	14,850 €



Illustration may vary from original.

The robust P15 Profi forwarding trailer is designed for the demanding forestry professional and is also available with the Pfanzelt friction drive. The forwarding trailer with a 13.0 t load capacity offers a high load bearing capacity with low dead weight for operations in standing timber. Loading cranes with reaches up to 10 metres with various lifting capacities are available for installation that can be equipped with double clam shell grippers or 4-finger grippers.

The most important sales arguments:

- Optimum performance/weight ratio for demanding forwarding work
- Frame extension and sliding axles for optimum weight distribution combined with a high degree of load flexibility
- Powerful professional crane with fast action valve for even quicker telescopic extension
- TÜV certificate with 25 and 40 km/h possible

Required tractor equipment:

- 1x 2-way valve for pivoting drawing bar
- 1x 1-way valve and pressureless return flow for crane control (not with independent oil supply)
- 1x two line pneumatic braking system

Technical specs

P15 SPECIAL OFFER

Design	Central spar (200 x 200 x 10 mm)
Double walled in crane support zone	•
Long flat bed	3,800 - 5,900 mm
Frame extension	2,000 mm (mechanically extensible)
Fender frame as per UVV	•
Loading cross section	max. 2.94 m ²
Stanchion pairs	4 pcs (5 mounting holes), insertable and rotatable
Hydraulic pivoting draw bar with 2 cylinders	•
Pivoting moment (at 200 bar)	23.6 kNm
Maximum excursion from centre	+/- 34° / +/- 750 mm
Load capacity on non-public roads	13.0 t
Permitted total weight on public roads	15.0 t
Dead weight (depending on additional equipment) approx.	4.6 t
Bogie axle swing travel	+/- 197 mm
Brake system	4-wheel pneumatic brake system
Braking area	406x120 mm, 10-hole rim
Tyres	500/45-22.5" 12 PR, stud profile
TÜV certification 25 km/h	•
Operating station on draw bar	•
A-column outrigger	•
Hitch	Bottom hitch/drawing lug
Loading crane	LK 5180
Reach	8,000 mm
Lift moment net	51 kNm
Pivoting moment	21.5 kNm
Crane control	8-way mechanical with 2 electrical functions for gripper and telescope
Pm 230 - Double clam shell gripper	•
Total price	40,900 €

On this page you can find optional accessories suitable for the Profi forwarding trailer P15.
You will find images, technical information and further explanations on the accessory options on the previous pages.

Category	Name	Order no.	Price
Tyres	Tyres 560/45-22.5" 12 PR, stud profile, forestry wheel (surcharge) ► p. 74	R.560.1043	600 €
	Tyres 600/50-22.5" 12 PR, stud profile, forestry wheel (surcharge) ► p. 74	R.600.1048	2,020 €
Brake system	Combination brake 4-wheel pneumatic and hydraulic 4-wheel brake	VS.KOB444	1,720 €
Hitch	Draw bar hitch bottom for forwarding trailer	VS.DURWP11	350 €
	Ball head suspension K80 for forwarding trailer	VS.KU80	390 €
Forwarding trailer add-ons	Stanchion pair with carrier for forwarding trailer	VS.RMT2	930 €
	Stanchion pair without carrier for forwarding trailer	VS.ROT2	530 €
	Loading platform 2.10 m wide, approx. 4.50 m long	VS.LP	6,150 €
	Loading platform can also be tilted with 2 cylinders (surcharge to LP)	VS.LPKIPP	3,950 €
	Cut material floor pan (installation height up to stanchion top edge)	VS.BHWRWP11	2,380 €
	Floor pan (installation height up to second stanchion radius)	VS.BWRWP11	2,380 €
	Stanchion extension (1 set = 8 pcs) 200 mm	VS.RV	310 €
Licensing	TÜV certificate 40 km/h incl. quick change wheel cover (surcharge instead of 25 km/h)	VS.TUEV40.1	855 €
Loading crane	Loading crane LK 51100 with 10,000 mm reach and 51 kNm (surcharge)	VS.KRAN51100	3,200 €
	Loading crane LK 6180 with 7,870 mm reach and 61 kNm (surcharge)	VS.KRAN6180	1,500 €
	Loading crane LK 61100 with 9,780 mm reach and 61 kNm (reduced price)	VS.KRAN61100	5,300 €
Independent hydraulic oil circuit	Independent oil supply with fixed PTO mounted pump (108 ltr., 200 bar)	VS.EIGOEL108	3,130 €
	Independent oil supply with fixed piston pump (108 ltr., 200 bar)	VS.EIGOEL108FEST	3,440 €
	Independent oil supply with fixed load-sensing pump (117 ltr., 230 bar)	VS.EIGOEL117	5,400 €
Crane control	EHC control Danfoss 8-way Autec control panel	VS.EHC8KABEL	7,600 €
	EHC control Danfoss 8-way Autec remote control panel	VS.EHC8FUNK	8,200 €
	EHC control Danfoss 8-way with 2 joysticks	VS.EHC8	8,000 €
	EHC control Danfoss 10-way (x6 proportional) valves with 2 joysticks	VS.EHC10	9,650 €
	Load sensing connection for Danfoss control block	VS.LOAD-SENSING CONNECTION	247 €
Stabilisers	Telescopic outriggers H-form incl. 2 control valves (surcharge instead of A-form)	VS.TAH	5,150 €
	Outrigger plates, size 300 x 300 mm (pair)	VS.ASTG	300 €
Gripper and rotator	Pfanzelt 4-finger gripper Pm 230 (surcharge instead of Pm 230)	VS.PM2304FING	770 €
	Pendulum with internal concealed hoses	VS.PSD1	660 €
Miscellaneous	Hydraulic oil cooler with electric fan	VS.OELKUEHL	1,390 €
	Crane cable winch, hydraulically driven	VS.KSW	2,910 €
	Operating hour counter (crane operation)	VS.BSTDZ	310 €
	Trunk scraper on main boom	VS.STK	360 €
	High seat for loading crane	VS.HSLK	940 €
	H3 flood light in folding arm with flood light protection	VS.ARBEITSSCHEINH3KNICK	410 €
	LED flood light in folding arm with flood light protection	VS.ARBEITSSCHEINLEDKNICK	815 €
	Two H3 flood light on crane column with flood light protection	VS.ARBEITSSCHEINH3KRAN-SAEULE	760 €
Drive	Wheel hub drive on rear axle with oil supply from tractor	VS.RADNABENANTRIEB6LOCHDW	16,250 €
	Wheel hub drive on rear axle via separate oil supply	VS.RADNABENANTRIEB6LOCHEIG	16,250 €



Perfect for the work of tree farmers.

The Pfanzelt S-line forwarding trailer is especially designed for service with private wood owners and semiprofessional operations. The reliability of the technology has the same priority as for professional. However, the job description is different.

An important criterion when buying a forwarding trailer is the safety equipment. Pfanzelt forwarding trailers offer all safety features required by KWF, FPA and the BG. The hydraulic overrun brake enables loaded road travel at speeds up to 40 km/h. The operating console on the draw bar offers a well organised work station. The joystick control provided as standard with its two electrical functions ensures that the operator can always operate the crane ergonomically.

Technical specs ► Page 68

Technical details that impress:

- Load carrying capacity in standing timber of 6, 9.2 or 11.0 t
- Double frame made of special steel
- Low design height for combination with smaller tractors
- Licensed for public roads for 25 and 40 km/h
- Modern and powerful Profi crane with 6.7, 7.2 or 8 m reach
- Heavy duty slewing gear for powerful pivoting, even uphill
- Concealed hoses protected against damage
- Independent hydraulic oil supply with protected piston pump installed in the draw bar (optional)
- Accessories for forestry professionals: Long frame version, crane cable winch



HERGESTELLT IN DEUTSCHLAND

Tested quality:



6.1 S-line forwarding trailers – technical specs



Bolted double frame (S9, S11)

The frame of the S-line forwarding trailer is made of two special steel U-bearers that are bolted together to create a double frame. This system is also widely used in truck manufacture. The torsional forces that are generated when working with loading cranes and driving on rough terrain must be absorbed by the frame. So that the frame can cope with these forces it is made of U-profiles and completely screwed together with special flange bolts. The possibility of fatigue cracks as known from welded structures is therefore excluded.

Even with the standard equipment, Pfanzenkran S-line forwarding trailers can be flexibly used for the transport of timber of various lengths. The extensive range of accessories opens up additional possibilities.



As soon as the last two stanchions have been turned, the forwarding trailer can also be loaded with metre wood bundles or loose metre wood at right angles to the direction of travel.

Bogie axle

The bogie axle of Pfanzelt forwarding trailers offers stability during crane operation and the best possible drive characteristics, especially in forwarding trails. The even distribution of the ground pressure is another big advantage.

The bogie axle is mounted on lubricatable and adjustable spherical articulated bearings. This guarantees true running for many years.



Standard

Brake systems

Pfanzelt offers two braking systems for legally loaded road travel for the S-line forwarding trailers. In addition to a pneumatic brake system, the range of accessories also includes an overrun brake.

The *Pfanzelt* hydraulic overrun brake transmits the braking force from the start-up device direct to the brakes without mediation by rods or Bowden cables that are vulnerable to faults. For increased safety when reversing and off road, the hydraulic overrun brake is combined with an additional hydraulic brake that can be manually actuated via a tractor control unit. This means that road travel up to a maximum speed of 40 km/h and a maximum weight of 8 t are therefore permitted.



Independent of forwarding trailer
- see accessory items



Steerable draw bar

The steerable draw bar with high steering angle available as standard with the S-line forwarding trailers enables easy manoeuvring in dense standing timber.

Two powerful hydraulic cylinders that can be operated from the tractor cab, even when the assemblage is in motion, facilitate operation even when the laden forwarding trailer is turned against the slope. The steerable draw bar can be mechanically locked when driving on roads.

Standard



Storage bin / chain saw holder

Chain saws and fuel canisters can be practically and neatly stowed on the forwarding trailer. An additional storage bin is ideally suited for lashing belts, tools and other small items.

Standard

- Chain saw holder for retrofitting 59 €
- Fuel canister holder for retrofitting 47 €
- Tool box for retrofitting 450 €



Licensing

Travel on public roads is no problem for Pfanzelt machines, even when loaded. With the TÜV certificate, the forwarding trailer can be licensed for top speeds of 25 or 40 km/h on public roads.



Lighting

The lighting system using LED lights is integrated in the frame. To protect the lights when working in the forest, these can be folded in.

Standard



Hitch

The draw bar can be supplied in top and bottom hitch versions. The independent hydraulic oil supply for the trailer is provided via a piston pump concealed in the draw bar. The bearings of the pivoting draw bar in the form of lubricatable and adjustable spherical articulated bearings ensure long-term operating safety of this component that is subject to heavy loading.

Independent of forwarding trailer
- see accessory items

Cut material pan

For branch material (length approx. 3,800 mm), divided in centre, hot-dip galvanised floor pan made of bolted components, with gripper slot for easy removal of double shell clam grippers with the crane.

Independent of forwarding trailer
- see accessory items



Floor pan

For the combined transport of branch material and trunks (length approx. 4,000 mm); single section, hot-dip galvanised Floor pan made of high strength special steel with edge reinforcements - for placing in the stanchion cage.

Independent of forwarding trailer
- see accessory items



Round bale loading platform (only S9, S11)

(kit with assembly instructions) loading length 5,000 mm (space for 8 round bales on one level).
With lashing lugs, hot-dip galvanised

2,150 €



Parking wheel for S-line forwarding trailer

435 €



Illustration may vary from original.



A 3-side tipper body with 4 stabilisers is available for transporting dry bulk.

Standard dimensions:
approx. 3.95 x 2.15 x 0.5 m

Long-frame version dimensions:
approx. 4.40 x 2.15 x 0.5 m

3-side tipper body
Independent of forwarding trailer
- see accessory items

Side wall height extension 50 cm



Wheel hub drive on rear axle via separate oil supply

- Radial piston motor for 2 hydraulically drive wheels incl. free running for 6-hole rim BB4
- Drive via independent oil supply 300 bar, 80 l/min (not included in price) with 3/2 valve and control unit mounted in tractor
- Functions of the control unit: Enabled with brake actuated or when pressure drops, uphill assist function, crane mode / travel mode changeover valve
- Drive power: 1.8 t, 7.5 km/h 300 bar, 80 ltr.

14,850 €

Wheel hub drive on rear axle with oil supply from tractor

- Radial piston motor for 2 hydraulically drive wheels incl. free running for 6-hole rim BB4
- Drive via tractor PTO (1 single way control unit, unpressurised return flow) with 3/2 way valves and tractor-mounted control unit
- Functions of the control unit: Enabled with brake actuated or when pressure drops, uphill assist function, crane mode / travel mode changeover valve
- Drive power: 1.0 t, 7.8 km/h 200 bar, 80 ltr.

14,850 €



6.2 S-line forwarding trailer - the most important features

Rm The crane is rated according to **crane loading class B4** for permanent dynamic loading.

Rm A carefully conceived system of **concealed hoses** over the entire crane minimises downtime.

Rm Protected from damage during loading, the piston rod is installed behind the front grille.

Rm The **hydraulic hoses** are run in a **hose shaft** to protect the user at the operating console.

Rm **Ergonomic operation** via joystick control or control panel for cable and wireless control.

Rm **Operating console** with non-slip standing plate, ladder and back support for optimum working safety.

Rm The large **oil supply tank** is installed so as to protect it from damage and prevent impairment of the field of vision.

Rm The especially robust and powerful **four cylinder slewing gear** made of cast metal with a high pivoting moment.

Rm **Steerable draw bar** for top and bottom attachment with protected piston pump mounted on or under the draw bar.

Rm Space saving **A-column stabilisers** with concealed cylinders ensure a high degree of stability when parking.

Rm A **one-man system** for **mechanically locking** the steerable draw bar when driving on public roads.

Rm Massive and robust **front grilles** for optimum safety during crane operation and when driving on public roads.

Rm **Lubricatable, adjustable articulated bearings** made of **spheroidal cast metal** ensure that the bogie axle runs true.

R **Power link system** – toggle lever control – guarantees manoeuvrable crane operation, greater reach and more lifting power.

R All positive locking bolts mounted in lubricatable **bronze bushes** maximises maintenance intervals and ensures stability under pressure.

R An optional **crane floodlight** turns night to day and reliably illuminates the gripper zone.

R The electrically actuated **quick-action valve**, supplied as standard, ensures rapid telescopic extension of simple telescopic booms.

R The **telescopic cylinder** is internally mounted, protecting it from damage.

R Equipped as standard with a powerful **flange rotator** and on request also with a **double pendulum brake**.

R **Various grippers** for every application: Double clam shell grippers, 4-finger grippers, earth grippers

R The optional hydraulic wheel hub drive guarantees safe driving that is easy on standing timber on sloping terrain.

R The **bolted double frame (S-line)** prevents fatigue cracking that occurs in welded frames.

R Folding lighting units protects lights against damage in standing timber.

R The various brake systems offer safety under way in the forest or on the roads.

Forwarding trailers

S6

S9

S11

Design

Frame structure	ladder frame	Double frame made of special steel, U-profile	
Bogie axle	•	•	•
Collision fender as per UVV	•	•	•
Front grille area	1.40 m ²	1.92 m ²	2.25 m ²
Flat bed length	3,500 mm	4,000 mm	4,450 mm
Hydraulic pivoting draw bar with 2 cylinders	•	•	•

Equipment

Stanchion pairs	3 + 1	4	4
Load capacity on non-public roads	6 t	9.2 t	11 t
Permitted total weight on public roads	6 t	up to 9.2 t	11 t
Dead weight with crane	approx. 1.7 t	approx. 2.97 t	approx. 3.58 t
Lighting	as per StVZO, integrated in frame, retractable		
TÜV certificate 25 km/h / 40 km/h	o/o	•/o	•/o
Operating station on draw bar	•	•	•
Brake system	2-wheel hydrl. brake system	2-wheel hydrl. brake system	4-wheel pressure pneumatic
Brake area	300x60 mm, 6-hole wheel	300x60 mm, 6-hole wheel	300x60 mm, 6-hole wheel

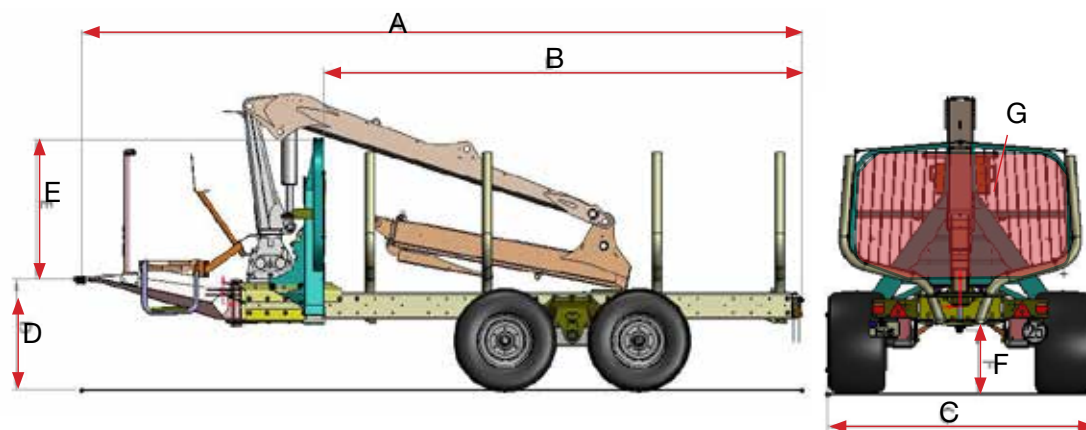
Tyres

Dimensions	11.5/80 15.3 Grooved profile	380/55-17" 14 PR grooved profile	480/45-17" 12 PR grooved profile
Wheel with valve protection	•	•	•

Loading crane

	LK 2764	LK 4267	LK 4272
Reach	6,200 mm	6,370 mm	7,200 mm
Lift moment net	27 kNm	40.5 kNm	40.5 kNm
Pivoting moment	8.2 kNm	15.2 kNm	15.2 kNm
Crane control	8-way mechanical, 2 control toggles, 2 electrical functions (rocker) for gripper and telescope		
Double clam shell gripper	•	• PM230	• PM230
4-finger gripper	-	o PM230	o PM230

S-line	S6	S9	S9 ALB	S11
A [mm] Length in transport position	5,310	6,030	6,030	6,530
B [mm] Loading length	3,477	4,000	4,000	4,450
C [mm] Width (tyres)				
11.5/80-15.3	1,795			
380/55-17		2,130	2,020	2,130
480/45-17		2,230	2,120	2,230
520/50-17		2,270	2,160	2,270
D [mm] Height of hitching eye				
11.5/80-15.3	842			
380/55-17		850	850	850
480/45-17		860	860	860
520/50-17				
E [mm] Height over Hitching eye	1,766	1,180	1,180	1,330
F [mm] Ground clearance				
380/55-17	379	510	510	
480/45-17		520	520	520
520/50-17				
G [m ²] Loading cross section	1.92	1.92	2.25	
Operating weight* [kg] with following cranes (type)				
2764	1.70			
4267		2.97	2.97	
4272	3.58	3.58	3.58	





With the new S6 forwarding trailer, Pfanzenberg is extending its range with a new bottom of range model. This model is perfectly suited for small tractors for semiprofessionals or tree farmers.

- The most important sales arguments:**
- Ladder frame made of high quality steel
 - Low forwarding trailer for small tractors
 - Overrun brake for safe on-road travel (optional)
 - Optimally adapted loading crane
 - TÜV certificate for 25 km/h possible

- Required tractor equipment:**
- 1x 1-way valve and pressureless return flow for crane control
 - 1x 2-way valve for pivoting drawing bar
 - 1x one-way valve for hydraulic brake

Technical specs	S6
Construction	Ladder frame 2x 160x110x5
Fender frame as per UVV	•
Front grille area	max. 1.4 m ²
Flat bed length	3,500 mm
Stanchion pairs	3 pairs
Hydraulic pivoting draw bar with 2 cylinders	•
Pivoting moment (at 200 bar)	11.9 kNm
Maximum excursion from centre	+/- 25° / +/- 549 mm
Load capacity on non-public roads	6.0 t
Permitted total weight on public roads	up to 6.0 t
Dead weight (depending on additional equipment) approx.	1.7 t
Bogie axle swing travel	+/- 17.8° / +/- 145 mm
Brake system	2-wheel hydr. brake system
Brake area	300 x 60, 6-hole wheel
Tyres	11.5/80-15.3, grooved tread, valve protection
Holder for chain saw and fuel canister	•
A-column stabiliser	•

Loading crane	LK 2764
Reach	6,200 mm
Lift moment net	27 kNm
Pivoting moment	8.2 kNm
Crane control	8-way mechanical, 2 control toggles with 2 electrical functions for gripper and telescope
Double clam shell gripper	•
Net purchase price	15,990 €

On this page you can find optional accessories suitable for the Profi forwarding trailer S6. You will find images, technical information and further explanations on the accessory options on the previous pages.

Category	Name	Order no.	Price
Tyres	Tyres 380/55-17" 14 PR, stud profile (surcharge) ► p. 74	R.380.1008	1,200 €
Brake system	2-wheel overrun brake, including 2-wheel hydraulic brake system		1,950 €



Bolted double frame (S6)

The frame of the S-line forwarding trailer S6 is in the form of a bolted double frame. The torsional forces that are generated when working with loading cranes and driving on rough terrain must be absorbed by the frame. To this end, all joints in the frame are secured with bolts not welds. The risk of fatigue cracks is thus excluded.



Launched in 2009, the S9 S-line forwarding trailer (old designation 9242), it is now the best seller of the S-line series. Optionally, the compact forwarding trailer is equipped with a hydraulic overrun brake.

Illustration may vary from original.

The most important sales arguments:

- Bolt and thus torsion resistant double frame made of high quality steel U-profile
- Low forwarding trailer for small tractors
- Overrun brake for safe on-road travel (optional)
- Powerful professional crane with quick-action valve
- TÜV certificate with 25 and 40 km/h possible
- Extensive range of accessories

Required tractor equipment:

- 1x 1-way valve and pressureless return flow for crane control (not with independent oil supply)
- 1x 2-way valve for pivoting drawing bar
- 1x one-way valve for hydraulic brake

Technical specs

S9

Construction	Double frame made of special steel, U-profile
Fender frame as per UVV	•
Front grille area	max. 1.92 m ²
Flat bed length	4,000 mm
Stanchion pairs	4 pcs, insertable and rotatable
Hydraulic pivoting draw bar with 2 cylinders	•
Pivoting moment (at 200 bar)	18.7 kNm
Maximum excursion from centre	+/- 30° / +/- 650 mm
Load capacity on non-public roads	9.2 t
Permitted total weight on public roads	up to 9.2 t
Dead weight (depending on additional equipment) approx.	2.97 t
Bogie axle swing travel	+/- 172 mm
Brake system	2-wheel pneumatic brake system
Brake area	300 x 60, 6-hole wheel
Tyres	380/55-17" 14 PR, grooved tread, valve protection
TÜV certification 25 km/h	•
Operating station on draw bar	•
Holder for chain saw and fuel canister	•
A-column outrigger	•
Hitch	Top hitch/drawing lug

Loading crane

LK 4267

Reach	6,370 mm
Lift moment net	40.5 kNm
Pivoting moment	15.2 kNm
Crane control	8-way mechanical, 2 control toggles with 2 electrical functions for gripper and telescope
Pm 230 - Double clam shell gripper	•

Net purchase price

20,750 €

On this page you can find optional accessories suitable for the Profi forwarding trailer S9. You will find images, technical information and further explanations on the accessory options on the previous pages.

Category	Name	Order no.	Price
Tyres	Tyres 480/45-17" 14 PR, stud profile (surcharge) ► p. 74	R.480.1007	960 €
	Tyres 520/50-17" 14 PR, stud profile (surcharge) ► p. 74	R.520.1009	1,940 €
	Tyres 520/50-17" 14 PR, stud profile, forestry wheel (surcharge) ► p. 74	R.520.1039	2,450 €
Brake system	Hydraulic 4-wheel braking system	VS.HYB4	860 €
	Hydraulic 4-wheel operating brake for logging trailer	VS.HYBB4	860 €
	Load control valve for hydraulic operating brake	VS.LASTREGELVENTIL	550 €
	Hitch rupture brake	VS.ABREISSBREMSE	1,010 €
	4-wheel overrun brake with reverse automatic (max. total wt. 8 t) incl. additional manual brake for safe braking when reversing	VS.ALBRWS9	2,820 €
	4-wheel pneumatic brake system	VS.DLB2	2,610 €
Forwarding trailer add-ons	Long frame version (loading length 4,450 mm)	VS.LRVS-LINE	520 €
	Cut material floor pan (installation height up to stanchion top edge)	VS.BHWS9	2,170 €
	Cut material floor pan (installation height up to stanchion top edge) for long-frame version	VS.BHWS9LANG	2,390 €
	Floor pan (installation height up to second stanchion radius)	VS.BWRWS9	2,170 €
	Floor pan (installation height up to second stanchion radius) for long-frame version	VS.BWRWS9LANG+S11	2,390 €
	3-side tipper body approx. 3.95 x 2.15 x 0.50 m (removable with 4 parking supports)	VS.LPKIPPSLINE	6,250 €
	3-side tipper body approx. 4.40 x 2.15 x 0.50 m for long-frame version (removable with 4 parking supports)	VS.LPKIPPSLINELANG	6,750 €
	Round bale loading platform (kit with assembly instructions)	VS.LADEBRUECKE	2,150 €
Licensing	TÜV certificate 40 km/h incl. quick change wheel cover (surcharge instead of 25 km/h)	VS.TUEV40.2	830 €
Loading cranes	Loading crane LK 4272 with 7,200 mm reach and 40.5 kNm (surcharge)	VS.KRAN4272NIEDRIG	1,890 €
Independent hydraulic oil circuit	Independent oil supply with fixed piston pump (108 ltr., 200 bar)	VS.EIGOEL9242	2,710 €
Crane control	EHC control Danfoss 8-way Autec control panel	VS.EHC8KABEL	7,600 €
	EHC control Danfoss 8-way Autec remote control panel	VS.EHC8FUNK	8,200 €
	EHC control Danfoss 8-way with 2 joysticks	VS.EHC8	8,000 €
	Load sensing connection for Danfoss control block	VS.LOAD-SENSING CONNECTION	247 €
Stabilisers	Outrigger plates, size 300 x 300 mm (pair)	VS.ASTG	300 €
Gripper and rotator	Pfanzelt 4-finger gripper Pm 230 (surcharge instead of Pm 230)	VS.PM2304FING	770 €
	Gripper add-on for round bales (for gripper Pm 230)	VS.BALLENAUFSATZ	790 €
	Pendulum with internal concealed hoses	VS.PSD1	660 €
Miscellaneous	Crane cable winch, hydraulically driven	VS.KSW	2,910 €
	Operating hour counter (crane operation)	VS.BSTDZ	310 €
	High seat for loading crane	VS.HSLK	940 €
	H3 flood light in folding arm with flood light protection	VS.ARBEITSSCHEINLEUCHNICK	410 €
	LED flood light in folding arm with flood light protection	VS.ARBEITSSCHEINLEDKNICK	815 €
Drive	Wheel hub drive on rear axle with oil supply from tractor	VS.RADNABENANTRIEBBLÖCHDW	14,850 €
	Wheel hub drive on rear axle via separate oil supply	VS.RADNABENANTRIEBBLÖCHEIG	14,850 €

Equipped with a larger face grille surface and a 45 cm longer flat bed, the S11 model offers the tried & tested technology of the S-line forwarding trailer with a greater loading capacity. The forwarding trailer can optionally be equipped with a forestry crane with a 8m reach.



Illustration may vary from original.

The most important sales arguments:

- Bolt and thus torsion resistant double frame made of high quality steel U-profile
- Expanded loading volume (front grille, frame)
- Very high performance to weight ratio
- Powerful professional crane with quick-action valve
- TÜV certificate with 25 and 40 km/h possible

Required tractor equipment:

- 1x 1-way valve and pressureless return flow for crane control (not with independent oil supply)
- 1x 2-way valve for pivoting drawing bar
- 1x two line pneumatic brake system

Technical specs

S11

Construction	Double frame made of special steel, U-profile
Fender frame as per UVV	•
Front grille area	max. 2.25 m ²
Flat bed length	4,450 mm
Stanchion pairs	4 pcs, insertable and rotatable
Hydraulic pivoting draw bar with 2 cylinders	•
Pivoting moment (at 200 bar)	18.7 kNm
Maximum excursion from centre	+/- 30° / +/- 650 mm
Load capacity on non-public roads	11.0 t
Permitted total weight on public roads	11.0 t
Dead weight (depending on additional equipment) approx.	3.58 t
Bogie axle swing travel	+/- 172 mm
Brake system	4-wheel pneumatic brake system
Brake area	300 x 60, 6-hole wheel
Tyres	480/45-17" 14 PR, grooved tread, valve protection
TÜV certification 25 km/h	•
Operating station on draw bar	•
Holder for chain saw and fuel canister	•
A-column outrigger	•

Loading crane

LK 4272

Reach	7,200 mm
Lift moment net	40.5 kNm
Pivoting moment	15.2 kNm
Crane control	8-way mechanical, 2 control toggles with 2 electrical functions for gripper and telescope
Pm 230 - Double clam shell gripper	•

Net purchase price

28,200 €

On this page you can find optional accessories suitable for the Profi forwarding trailer S11.
You will find images, technical information and further explanations on the accessory options on the previous pages.

Category	Name	Order no.	Price
Tyres	Tyres 520/50-17" 14 PR, stud profile (surcharge) ► p. 74	R.520.1009	980 €
	Tyres 520/50-17" 14 PR, stud profile, forestry wheel (surcharge) ► p. 74	R.520.1039	1,490 €
Hitch	Ball head suspension K80 for forwarding trailer	VS.KU80	390 €
Forwarding trailer add-ons	Cut material floor pan (installation height up to stanchion top edge)	VS.BHWS11	2,390 €
	Floor pan (installation height up to second stanchion radius) for long-frame version	VS.BWRWS9LANG+S11	2,390 €
	3-side tipper body approx. 4.40 x 2.10 x 0.50 m for long-frame version (removable with 4 parking supports)	VS.LPKIPPSLINELANG	6,750 €
	Round bale loading platform (kit with assembly instructions)	VS.LADEBRUECKE	2,150 €
Licensing	TÜV certificate 40 km/h incl. quick change wheel cover (surcharge instead of 25 km/h)	VS.TUEV40.2	830 €
Independent hydraulic oil circuit	Independent oil supply with fixed piston pump (108 ltr., 200 bar)	VS.EIGOEL9242	2,710 €
Loading cranes	Loading crane LK 4280 with 7,850 mm reach and 41 kNm (surcharge)	VS.KRAN4280	1,890 €
Crane control	EHC control Danfoss 8-way Autec control panel	VS.EHC8KABEL	7,600 €
	EHC control Danfoss 8-way Autec remote control panel	VS.EHC8FUNK	8,200 €
	EHC control Danfoss 8-way with 2 joysticks	VS.EHC8	8,000 €
	Load sensing connection for Danfoss control block	VS.LOAD-SENSING CONNECTION	247 €
Stabilisers	Outrigger plates, size 300 x 300 mm (pair)	VS.ASTG	300 €
Gripper and rotator	Pfanzelt 4-finger gripper Pm 230 (surcharge instead of Pm 230)	VS.PM2304FING	770 €
	Gripper add-on for round bales (for gripper Pm 230)	VS.BALLENAUFSATZ	790 €
	Pendulum with internal concealed hoses	VS.PSD1	660 €
Miscellaneous	Crane cable winch, hydraulically driven	VS.KSW	2,910 €
	Operating hour counter (crane operation)	VS.BSTDZ	310 €
	High seat for loading crane	VS.HSLK	940 €
	H3 flood light in folding arm with flood light protection	VS.ARBEITSSCHEINH3KNICK	410 €
	LED flood light in folding arm with flood light protection	VS.ARBEITSSCHEINLEDKNICK	815 €
Drive	Wheel hub drive on rear axle with oil supply from tractor	VS.RADNABENANTRIEB6LLOCHDW	14,850 €
	Wheel hub drive on rear axle via separate oil supply	VS.RADNABENANTRIEB6LLOCHEIG	14,850 €



7.0 Tyres for Pfanzelt forwarding trailers

Illustration may vary from original.



R.480.1051 - Tyres 480/45-17.0" 14 PR, grooved tread, valve protection

R.380.1010- Tyres 380/55-17.0" 14 PR, grooved tread, valve protection (not depicted)

Illustration may vary from original.



R.400.x - Tyres 400/60-15.5" 14 PR, stud tread, valve protection

Illustration may vary from original.

Illustration may vary from original.



R.480.1007 - Tyres 480/45-17.0" 14 PR, grooved tread, valve protection

R.380.1059 - Tyres 380/55-17.0" 14 PR, grooved tread, valve protection (not depicted)

Illustration may vary from original.



R.500.1074 - Tyres 500/45-22.5" 12 PR, stud tread, forestry wheel

Illustration may vary from original.



R.520.x - Tyres 520/50-17" 159B, stud tread, forestry wheel

R.480.x - Tyres 480/50-17" 159B, stud tread, forestry wheel

R.380.x - Tyres 380/50-17" 159B, stud tread, forestry wheel

Illustration may vary from original.



R.520.x - Tyres 520/50-17", stud tread, valve protection

R.480.x - Tyres 480/50-17", stud tread, valve protection

R.380.x - Tyres 380/50-17", stud tread, valve protection

Illustration may vary from original.



- Tyres 550/45-22.5" 12 PR, stud tread, forestry wheel

Illustration may vary from original.



R.560.x - Tyres 560/45-22.5" 12 PR, stud tread, forestry wheel

Illustration may vary from original.



R.600.x - Tyres 600/50-22.5" 12 PR, stud tread, forestry wheel

Illustration may vary from original.



R.650.x - Tyres 650/45-22.5" 16 PR, AS tread, forestry wheel

Illustration may vary from original.



R.600.x - Tyres 600/50-22.5" 16 PR, AS tread, forestry wheel

Illustration may vary from original.



R.710.x - Tyres 710/40-22.5" 16 PR, AS tread, forestry wheel

Information:

In order to ensure operational safety under difficult terrain conditions, the wheels of our forwarding trailers are normally delivered with tubes.



Heavy lift professional crane for comfortable loading.

The Pfanzelt crane range is one of the most extensive on the market. The modern and powerful professional cranes are available in various lifting classes from 4 to 9 m/t and reaches up to 10 m. In addition to the technical specifications, the cranes also differ in their construction.

Forestry cranes

Pfanzelt loading cranes are designed for professional service. The specifications of the cranes vary according to whether they are intended for use on a Pfanzelt forwarding trailer or an a carrier vehicle (tractor, harvesting machine etc.). These can also be mounted on the 3-point hitch of a standard tractor.

Logging grab and crane

Pfanzelt manufactures cranes that are especially designed to be mounted on specialised forestry machines and tractors used in forestry applications. The two production series differ in relation to logging grabs and logging cranes. The first series have a lower crane column and are therefore especially designed for hauling long timber. In contrast to logging grabs, logging cranes have a high crane column and are optimised both for hauling long timber and for loading short timber onto a forwarding trailer.



Two systems are available from Pfanzelt for optimum, ergonomic stabilisation of the tractor when the crane is attached. In addition to the classic A-column stabiliser (*below*), a H-column stabiliser is also available for large cranes (*top*).



HERGESTELLT IN DEUTSCHLAND

Tested quality:



During a report about the S-line forwarding trailer, the crane was also mentioned. "Pfanzelt fully relies on the engineering from its Profi models for the slewing gear (cast housing, double pinion slewing gear in oil bath). The 4267 does not at all make the impression of being a budget entry level model. Pfanzelt has equipped it with, among other things, a concealed cylinder in telescopic tube, high quality bearings [...] as well as concealed hydraulic hoses.

HOLZmachen Winter 2012





More reach, more lifting power, greater pivoting moment.

Pfanzelt forestry cranes are designed for professional service. Besides loading cranes, the Pfanzelt crane range also includes cranes for forwarding short and long time for attachment to tractors and specialised forestry tractor units. These usually have a larger lifting force and a higher pivoting moment to enable powerful pivoting of the crane – even uphill.

Technical specs ► Page 84

Technical details that impress:

- Modern and powerful professional crane with reach up to 10 m and 9 m/t lifting force.
- Crane tested according to load class B4 for durability
- Slewing gear housing made of cast metal provides even more strength.
- Concealed hoses up to the crane tip for maximum protection against damage
- Top-mounted main boom cylinder outside the danger zone
- Crane pins with brass bushes designed for heavy duty daily use (Ø 50 mm)
- Rapid traverse valve for rapid telescopic extension with single telescope
- Various grippers for each application: Log grippers, 4-finger grippers, earth grippers



HERGESTELLT IN DEUTSCHLAND

Tested quality:





Slewing gear

Pfanzelt cranes have especially robust and powerful 4-cylinder slewing gear. The resulting high pivoting moment means that loading work can also be performed when working uphill.

Summary of pivoting moments of Pfanzelt forestry cranes

Crane series	Net pivoting moment
41*, 42*, 43*	15.2 kNm
51*, 52*	21.5 kNm
61*, 62*	25.0 kNm
71*	27.0 kNm

The large distance between the bearings and the oil immersion bath ensure reliable operation. Shear forces that are generated when working with heavy trunks are safely absorbed.



Standard



Crane loading class B4

Pfanzelt cranes are made of especially tough special steel. The crane is rated according to crane loading class B4 for permanent dynamic loading. The main boom cylinder can be fitted as an upright or reclining cylinder above the main boom so that it is always protected against damage when loading trunks.

Standard



Safety

At Pfanzelt safe handling of forestry machines has the topmost priority. All cranes mounted in the Pfanzelt factory come with a crane test log and initial acceptance by an independent crane expert in accordance with the regulations of the BG.

Standard

Controllers

The highest performance is achieved when the controls are perfectly ergonomic. This is determined by the operating position and the crane controller. All Pfanzelt forestry cranes are fitted as standard with a mechanical control block, 2 control toggles and an electrical switch. This means that the individual boom movements can be easily and rapidly coordinated, without having to reach for different control levers or turning.

In addition to a mechanical crane control, the crane can also be operated via an EHC controller with a cord or wireless control panel. The crane can also be controlled via two separate toggle switches that are installed on a rotary seat in the tractor.



EHC control with two joysticks in control panel or individually mounted on swivel chair.

EHC8 - EHC control Danfoss 8-way with 2 joysticks

8,950 €

EHC10 - EHC control Danfoss 10-way (6x proportional) with 2 joysticks

10,880 €



EHC control via control panel with 5 m cable or wireless.

EHC8KABEL - EHC control Danfoss 8-way Autec control panel (not depicted)

8,560 €

EHC8FUNK - EHC control Danfoss 8-way Autec wireless control panel

9,250 €





Hose routing

The hydraulic hoses are laid from the control block to the crane tip so as they are protected, ensuring low down-times and the highest degree of safety when working with the forestry crane in sensitive applications. Pfanzelt therefore attaches the highest priority to ensuring that the hydraulic hoses are protected over the entire crane by being concealed (internal routing). At points of high physical loading, the hoses are laid in a hose shaft. Additional rotary cutouts increase the service life of the hydraulic hoses.

To increase operator safety, the hoses are also routed through a hose shaft in the vicinity of the control stand.

Standard



The telescopic cylinder is also internally mounted, protecting it from damage during crane work.

The optionally available pendulum with internally laid hydraulic hoses enables protection right up to the crane tip. This is also equipped with a double pendulum brake. This ensures ergonomic operation of the crane and long service life.

PSD - Pendulum with hoses concealed all the way to the crane tip

for 4.5 t rotator	740 €
for 6.0 t rotator	740 €
for 10.0 t rotator	740 €

Independent hydraulic oil circuit

For carrier vehicles with low hydraulic power, Pfanzelt cranes can be equipped with an on-board hydraulic systems. The oil supply tank is neatly integrated in the A-column support and the hydraulic pump in the draw bar, all helping to avoid field of vision restrictions.

EIGOEL108 - independent oil supply with PTO-mounted pump (108 ltr., 200 bar) and oil tank (concealed installation in A-column)

3,530 €

EIGOEL108FEST - independent oil supply with fixed piston pump (108 ltr., 200 bar) Cardan shaft wide angle at one end, oil tank protected in A-column (possible with top and bottom hitch)

3,880 €

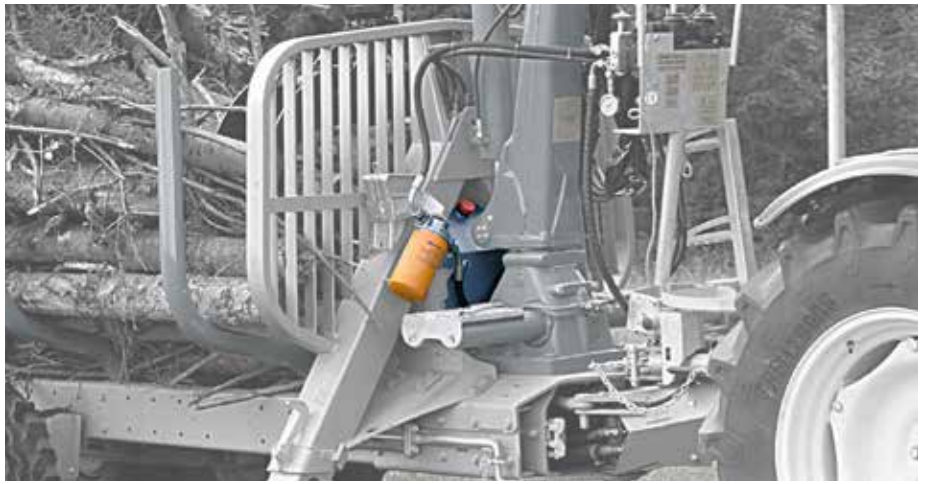
Independent oil supply with fixed piston pump (130 ltr., 200 bar) (130 ltr., 200 bar) see above

4,230 €

EIGOEL117 - independent oil supply with fixed load-sensing pump (117 ltr., 230 bar), oil tank with concealed installation in A-column

Note: only possible in combination with bottom hitch

6,250 €



Quick action value (only for single telescope)

Pfanzelt forestry cranes are the only such cranes on the market equipped as standard with a rapid traverse valve. This enables the rapid telescopic extension even in the case of telescopic booms with only one extension.

The electrically control rapid traverse valve directs the hydraulic oil that flows from the cylinder straight back into the latter and thus achieves an approx. 1.5 fold extension speed.

Standard



Power link system

The toggle system of Pfanzelt forestry cranes – also known as the power link system – between the main boom and folding boom ensures optimum crane geometry for loading work. Ergonomic loading directly onto the front grille is also thus made possible. It also ensures constant force, greater reach and a higher working speed.

Standard





Stabilisers

Optimum parking stability for operating the loading crane is assured by the A-column stabilisers. The telescopic structure of the stabilisers ensures secure support even in thick stands of timber and on slopes.

In addition to A-column stabilisers, the extensive range of accessories includes H-column stabilisation for cranes with a very long reach and a high lifting force. The wider stabilisation area ensures even greater stability.

TA - telescopic outrigger A-form

Hydraulic actuation via control block
 For forwarding trailers standard
 For 3-point crane 2,350 €

TAH - telescopic outrigger H-form

incl. 2 control valves, hydraulic actuation via control block
 For forwarding trailers standard
 For 3-point crane 8,100 €



ASTG - outrigger plates, 300 x 300 mm (pair)

Optional outrigger plates increase stability on loose ground.

340 €



Operating station and high seat

The Pfanzelt operating station mounted as standard on the draw bar provides a well organised work station outside the hazard zone with an optimum view for safety purposes of the loading crane and the surrounding area. The back rest of the platform and the hand guard over the control toggles optimize the operator's safety and ensure that he adopts an ergonomic working stance.

A high seat mounted on the side of the crane column, which rotates with the crane, is optionally available with nearly all Pfanzelt forestry cranes. The joy sticks are ergonomically mounted on both sides of the seat.



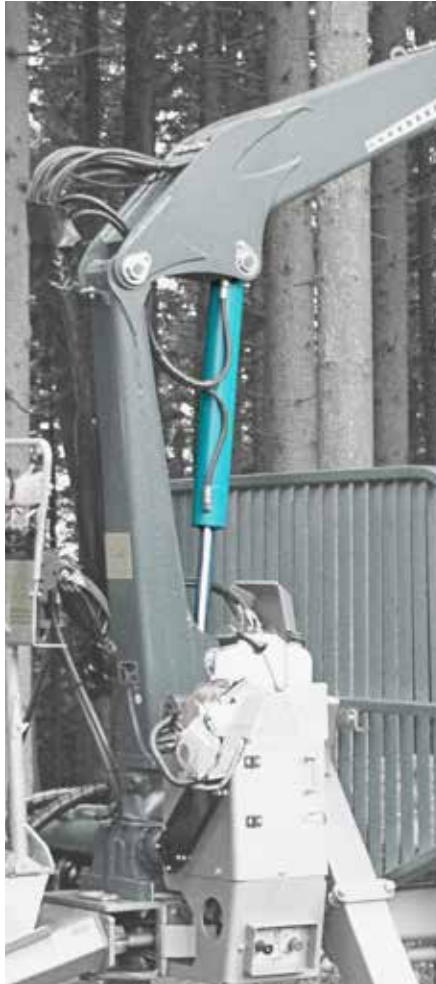
Depending on forwarding trailer, in some cases standard equipment - see accessory items

Crane attachment

Pfanzelt loading cranes for mounting on forwarding trailers and other vehicles are available in two different versions. The distinction lies in the position of the main boom cylinder. This is arranged vertically under the main boom or lying horizontally above the main boom.

The top mounting of the cylinder protects it from damage when handling timber.

So that the upright main boom cylinder is also protected from damage, this is mounted so that the piston rod is protected by the forwarding trailer's fender grille.



Standard
Depending on crane type

Trunk scraper

A trunk scraper facilitates loading work with the forestry crane, especially with long sections or very long treetop material. The scraper is mounted on the main boom of the crane.



Trunk scraper on main boom 405 €

Crane cable winch

If the crane's reach is not long enough, the crane winch can be used to pull the material to be lifted closer.



3,230 €



Operating hours counter

The operating hours counter records the hours in which the loading crane is service. This is especially useful if the forwarding trailer is shared by several users or is hired out.

350 €



Crane floodlights

On request, the crane can be equipped with crane floodlights. It is possible to have two floodlights fitter to the side of the crane column or one floodlight mounted on the inside of the telescopic arm.

- H3 flood light in folding arm with flood light protection 460 €
- LED flood light in folding arm with flood light protection 935 €
- Two H3 flood lights on crane column with flood light protection 760 €

1,570 €



Hydraulic oil cooler

The forwarding trailer can optionally be equipped with a hydraulic oil cooler. This is especially useful for large cranes with a hydraulic drive system.



3-point linkage for crane,
with crane mounting plate for connecting crane and support, telescopic outrigger A-form, hydraulic actuation via control block

3,500 €

Transport pallet for separate crane shipment (not depicted)

260 €

Rm 8.3 Grippers

Grippers

Clam shell grippers can be mounted on the regular grippers for loading dry bulk. Special gripper attachments for loading round bales are also available as accessories. These can be quickly and easily mounted on the existing double clam shell grippers.

The 4-finger gripper ensures easy and ergonomic loading of branches and cut wood.

Pfanzelt grippers adapted to various crane sizes are available in various sizes.



VS.SCHALENGREIFER600 - Snap-on clam shells for gripper Pm 230 shell width 600 mm **740 €**



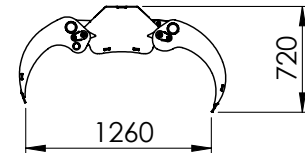
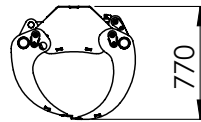
VS.SCHALENGREIFER800 - Snap-on clam shells for gripper Pm 230 shell width 800 mm **800 €**



VS.SCHALENGREIFER1000 - Snap-on clam shells for gripper Pm 230 shell width 1000 mm **920 €**

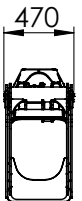
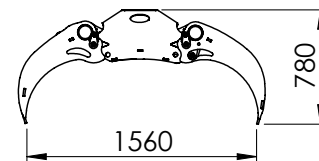
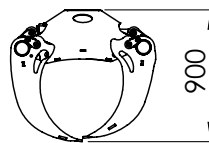
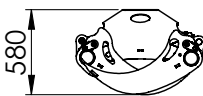


VS.PM230 - Gripper Pm 230
1,210 €

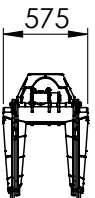
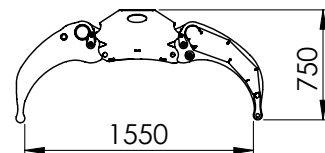
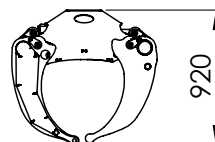
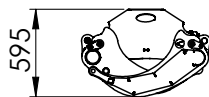


VS.PM2304FING - Gripper Pm 230 4-finger
2,040 €

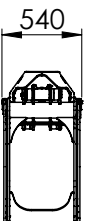
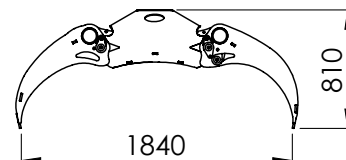
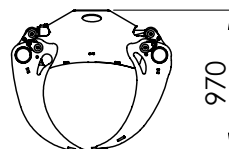
VS.PM270 - Gripper Pm 270
2,590 €



VS.PM2704FING - Gripper Pm 270 4-finger
3,520 €



VS.PM360 - Gripper Pm 360
3,590 €





VS.WZSW - Quick-action implement coupling on rotator for griper Pm 230 (is needed 1x for crane equipment)
440 €

VS.WZSWKU - Additional coupling unit (one is required for each additional implement)
196 €



VS.BALLENAUFSATZ - Gripper add-on for round bales (for gripper Pm 230)
890 €



Illustration may vary from original.

VS.FCB50 - Dry bulk gripper FCB 50
 Capacity 50 ltr., 33 cm wide, opening width 89 cm,
 Weight 52 kg
1,980 €

OO.70622.FCB125
 - Dry bulk gripper FCB 125 -
 Capacity 125 ltr., 45 cm wide, opening width 120 cm, weight 135 kg
2,690 €



Loading crane with top-mounted main boom cylinder	4167	4177	5169
Reach	6,620 mm	7,550 mm	6,710 mm
Lift moment net	41 kNm	41 kNm	51 kNm
Pivoting moment	15.2 kNm	15.2 kNm	21.5 kNm
Slewing range	370°	370°	370°
Telescope	single	single	single
Rotator, infinite	4.5 t	4.5 t	4.5 t
Gripper	Pm 230	Pm 230	Pm 230
Crane control	8-way mechanical, 2 control toggles, 2 electrical functions (rocker) for gripper and telescope		
Operating pressure	190 bar	190 bar	190 bar
Pump flow rate recommended (l/min.)	35-90	35-90	50-100
Weight (approx.)	825 kg	905 kg	935 kg

Loading crane with top-mounted main boom cylinder	5180	51100	6169
Reach	8,000 mm	10,000 mm	6,710 mm
Lift moment net	51 kNm	51 kNm	61 kNm
Pivoting moment	21.5 kNm	21.5 kNm	25 kNm
Slewing range	370°	370°	370°
Telescope	single	double	single
Rotator, infinite	4.5 t	4.5 t	6.0 t
Gripper	Pm 230	Pm 230	Pm 230
Crane control	8-way mechanical, 2 control toggles, 2 electrical functions (rocker) for gripper and telescope		
Operating pressure	190 bar	190 bar	215 bar
Pump flow rate recommended (l/min.)	50-100	50-100	50-100
Weight (approx.)	1,035 kg	1,125 kg	935 kg

Loading crane with top-mounted main boom cylinder	6180	61100
Reach	7,980 mm	9,950 mm
Lift moment net	61 kNm	61 kNm
Pivoting moment	25 kNm	25 kNm
Slewing range	370°	370°
Telescope	single	double
Rotator, infinite	6.0 t	6.0 t
Gripper	Pm 230	Pm 230
Crane control	8-way mechanical, 2 control toggles, 2 electrical functions (rocker) for gripper and telescope	
Operating pressure	215 bar	215 bar
Pump flow rate recommended (l/min.)	50-100	50-100
Weight (approx.)	1,035 kg	1,125 kg

Loading crane	Z-crane Z4359
Reach	5,700 mm
Lift moment net	40.5 kNm
Pivoting moment	15.2 kNm
Slewing range	370°
Telescope	single
Rotator, infinite	4.5 t
Gripper	Pm 230
Crane control	8-way mechanical, 2 control toggles, 2 electrical functions (rocker) for gripper and telescope
Operating pressure	190 bar
Pump flow rate recommended	35-90 l/min
Weight (approx.)	945 kg

Information:

The stated lift moments are maximum values and do not indicate the continuous lifting force. All figures are understood to exclude gripper and rotator. The maximum lifting force can only be achieved when sufficient hydraulic pressure is provided by the tractor unit or on the on-board hydraulics. The maximum system pressure must be adjusted to that the stability of the vehicle is assured.

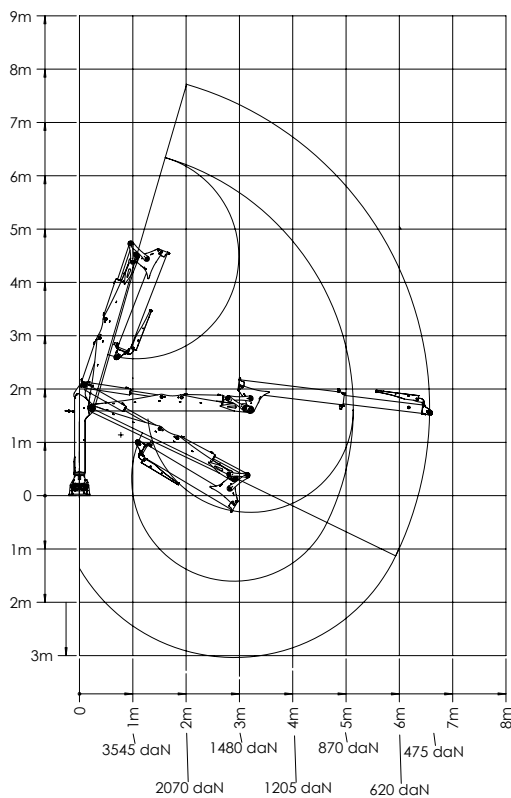
Loading crane with vertical main boom cylinder	4267	4272	4280
Reach	6,370 mm	7,140 mm	7,850 mm
Lift moment net	40.5 kNm	40.5 kNm	41 kNm
Pivoting moment	15.2 kNm	15.2 kNm	15.2 kNm
Slewing range	370°	370°	370°
Telescope	single	single	single
Rotator, infinite	4.5 t	4.5 t	4.5 t
Gripper	Pm 230	Pm 230	Pm 230
Crane control	8-way mechanical, 2 control toggles, 2 electrical functions (rocker) for gripper and telescope		
Operating pressure	190 bar	190 bar	190 bar
Pump flow rate recommended (l/min.)	35-90	35-90	50-100
Weight (approx.)	910 kg	990 kg	1,070 kg

Loading crane with vertical main boom cylinder	5280	52100	6280	62100
Reach	7,800 mm	9,800 mm	7,750 mm	9,590 mm
Lift moment net	50 kNm	51 kNm	61 kNm	62 kNm
Pivoting moment	21.5 kNm	21.5 kNm	25 kNm	25 kNm
Slewing range	370°	370°	370°	370°
Telescope	single	double	single	single
Rotator, infinite	4.5 t	4.5 t	4.5 t	6.0 t
Gripper	Pm 230	Pm 230	Pm 230	Pm 230
Crane control	8-way mechanical, 2 control toggles with 2 electrical functions (rocker) for gripper and telescope			
Operating pressure	190 bar	190 bar	220 bar	220 bar
Pump flow rate recommended (l/min.)	35-90	35-90	50-120	50-120
Weight (approx.)	910 kg	990 kg	1,070 kg	1,480 kg

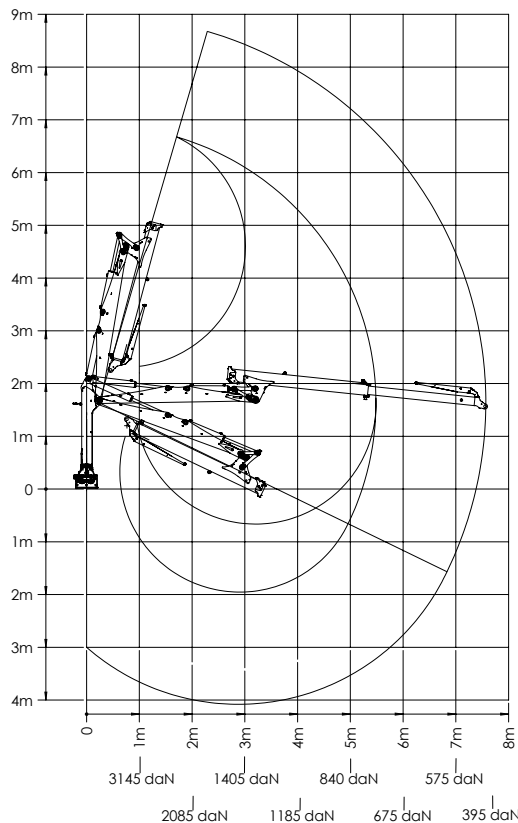


Loading crane	4167	4177	5169	5180
Reach	6,620 mm	7,550 mm	6,710 mm	8,000 m
Lifting moment gross/net	52 / 41 kNm	52 / 41 kNm	69 / 51 kNm	69 / 51 kNm
Pivoting moment	15.2 kNm	15.2 kNm	21.5 kNm	21.5 kNm
Slewing range	370°	370°	370°	370°
Rotator, infinite	4.5 t	4.5 t	4.5 t	4.5 t
Gripper	Pm 230	Pm 230	Pm 230	Pm 230
Crane control	2 control toggles with 2 electrical functions			
Operating pressure	190 bar	190 bar	190 bar	190 bar
Pump flow rate recommended	35-90 l/min	35-90 l/min	50-100 l/min	50-100 l/min
Weight (approx.)	825 kg	905 kg	935 kg	1,035 kg
Price	13,510 €	15,470 €	18,700 €	21,150 €

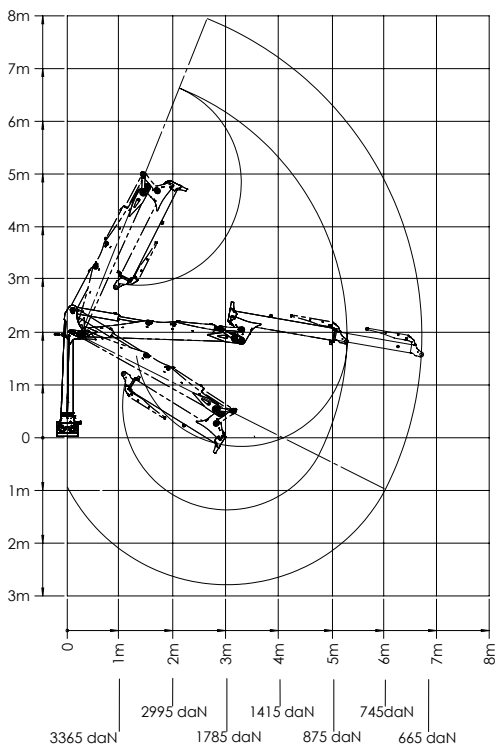
4167



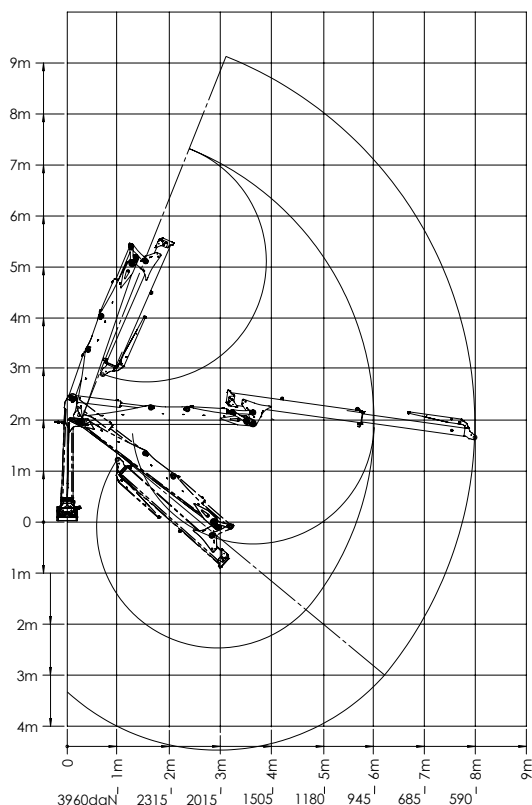
4177



5169

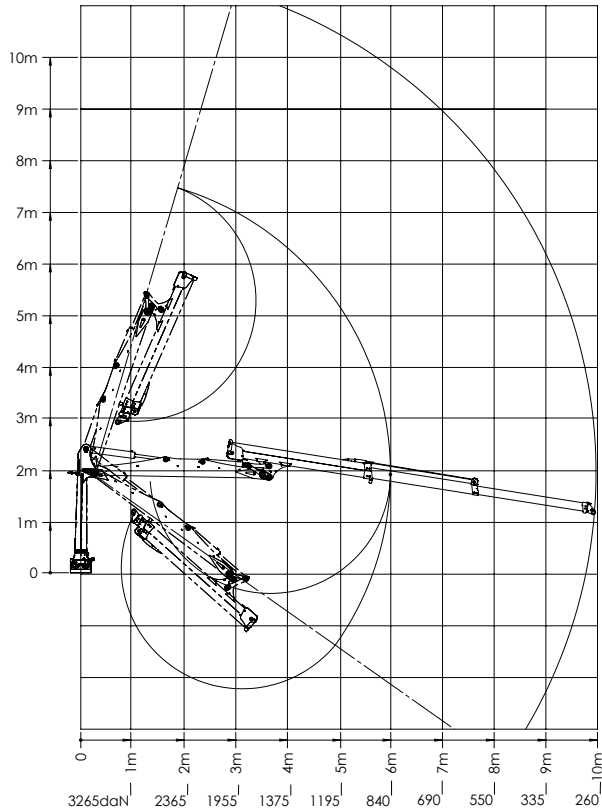


5180

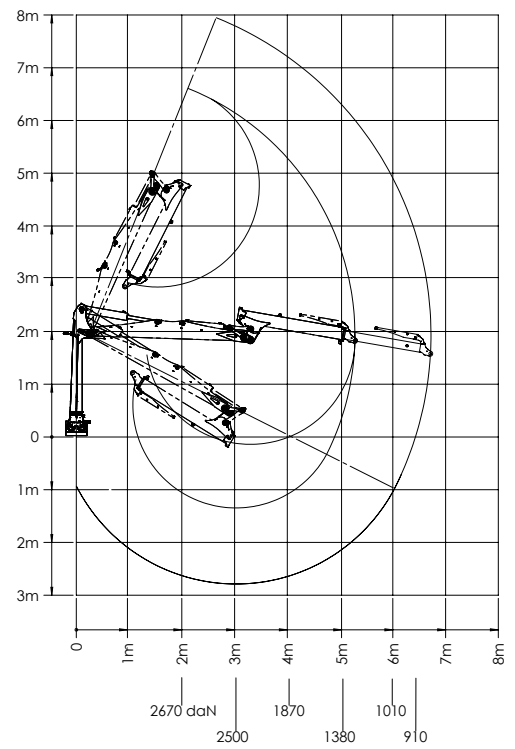


Loading crane	51100	6169	6180	61100
Reach	10,000 mm	6,710 mm	7,980 mm	9,950 m
Lifting moment gross/net	69 / 51 kNm	86 / 61 kNm	86 / 61 kNm	86 / 61 kNm
Pivoting moment	21.5 kNm	25 kNm	25 kNm	25 kNm
Slewing range	370°	370°	370°	370°
Rotator, infinite	4.5 t	6.0 t	6.0 t	6.0 t
Gripper	Pm 230	Pm 230	Pm 230	Pm 230
Crane control	2 control toggles with 2 electrical functions			
Operating pressure	190 bar	215 bar	215 bar	215 bar
Pump flow rate recommended	50-100 l/min	50-100 l/min	50-100 l/min	50-100 l/min
Weight (approx.)	1,125 kg	935 kg	1,035 kg	1,125 kg
Price	24,930 €	21,420 €	23,030 €	27,100 €

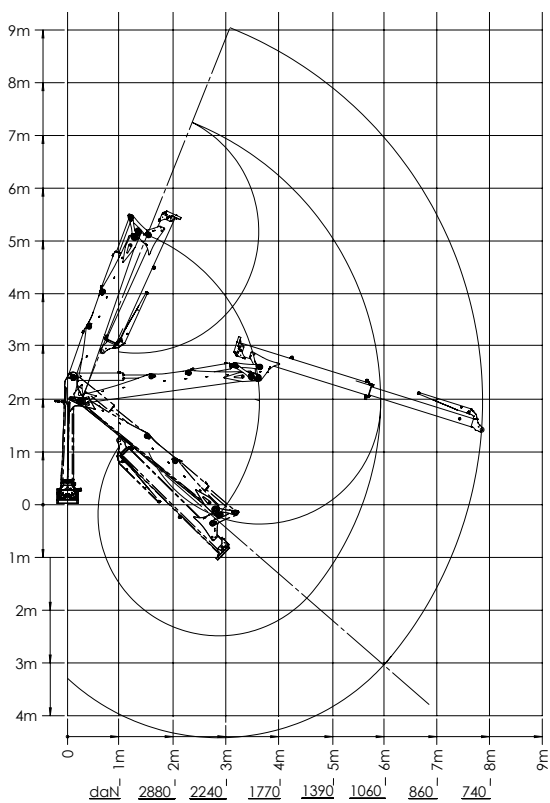
51100



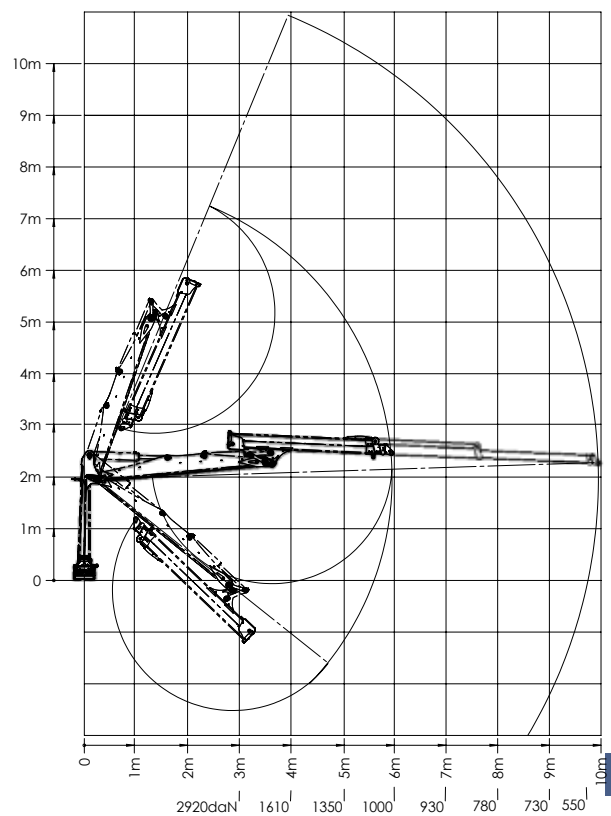
6169



6180



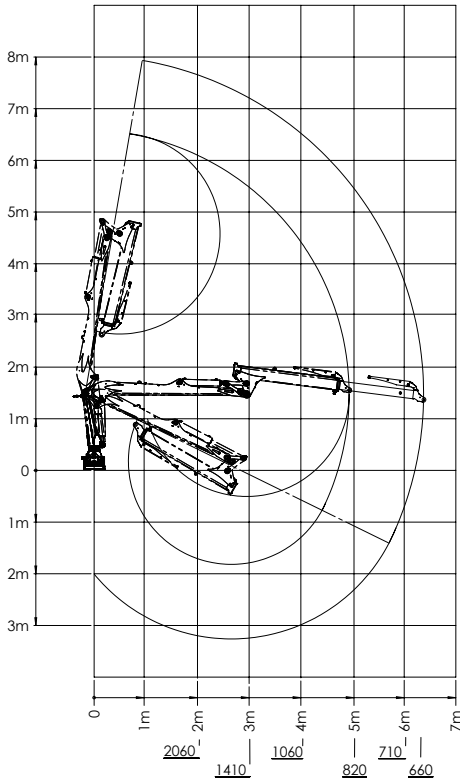
61100



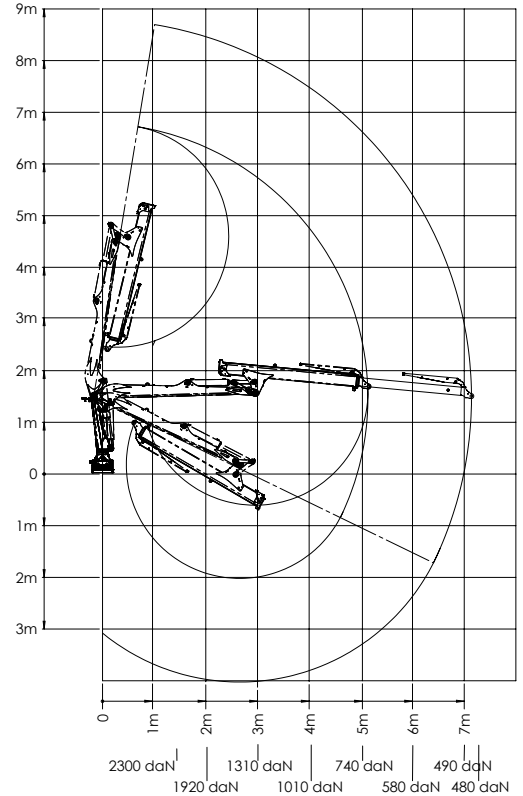


Loading crane	4267	4272	4280	5280
Reach	6,370 mm	7,140 mm	7,850 mm	7,800 mm
Lifting moment gross/net	56 / 40.5 kNm	56 / 40.5 kNm	56 / 41 kNm	70 / 50 kNm
Pivoting moment	15.2 kNm	15.2 kNm	15.2 kNm	21.5 kNm
Slewing range	370°	370°	370°	370°
Rotator, infinite	4.5 t	4.5 t	4.5 t	4.5 t
Gripper	Pm 230	Pm 230	Pm 230	Pm 230
Crane control	2 control toggles with 2 electrical functions			
Operating pressure	190 bar	190 bar	190 bar	205 bar
Pump flow rate recommended	35-90 l/min	35-90 l/min	35-90 l/min	50-100 l/min
Weight (approx.)	910 kg	990 kg	1,070 kg	1,105 kg
Price	13,050 €	14,930 €	16,790 €	21,150 €

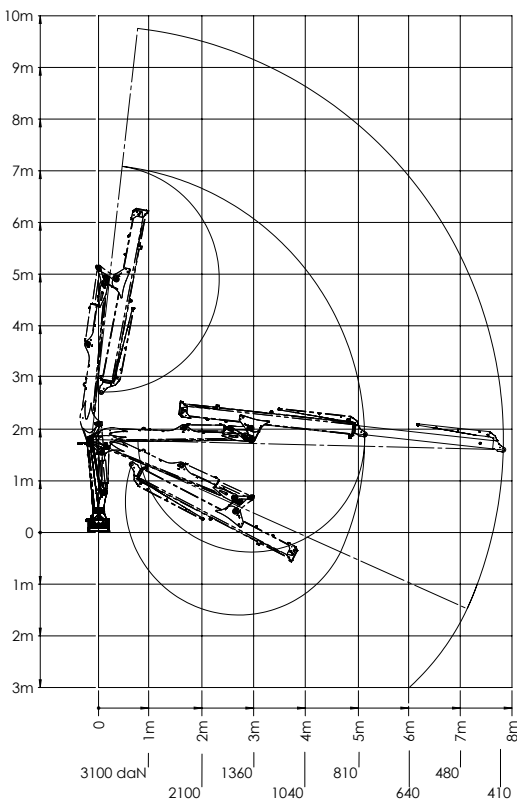
4267



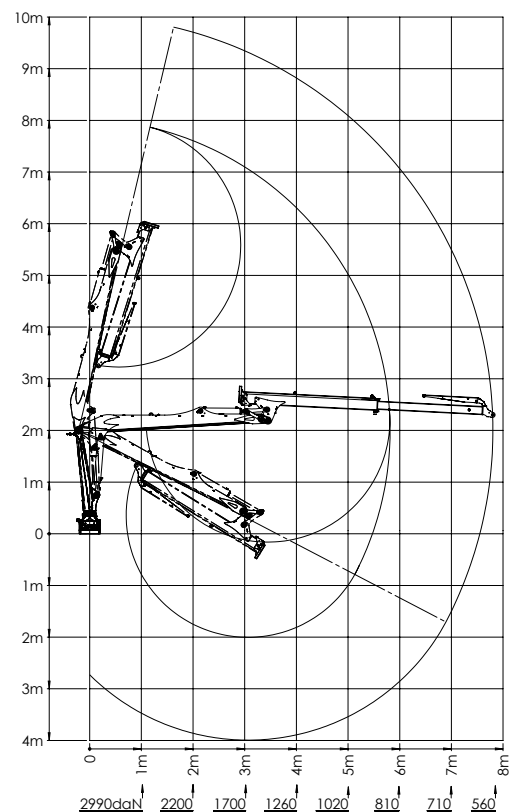
4272



4280

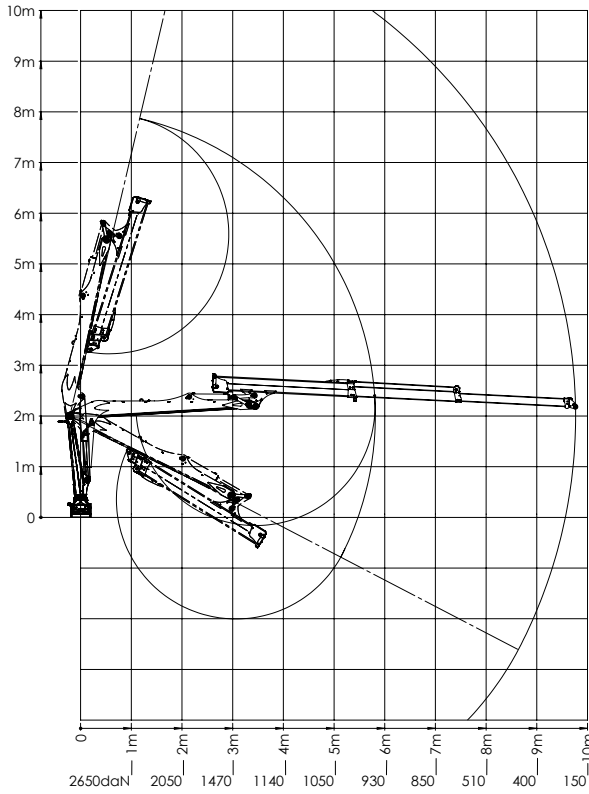


5280

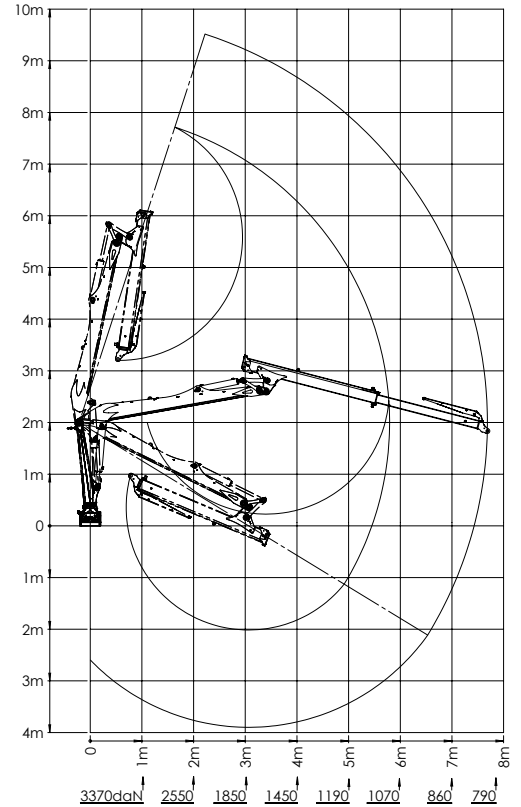


Loading crane	5285	52100	6280	62100	Z4359
Reach	8,500 mm	9,800 mm	7,750 mm	9,590 m	5,700 mm
Lifting moment gross/net	70 / 50 kNm	70 / 51 kNm	79 / 61 kNm	79 / 62 kNm	52 / 40.5 kNm
Pivoting moment	21.5 kNm	21.5 kNm	25 kNm	25 kNm	15.2 kNm
Slewing range	370°	370°	370°	370°	370°
Rotator, infinite	4.5 t	4.5 t	4.5 t	6.0 t	4.5 t
Gripper	Pm 230	Pm 230	Pm 230	Pm 230	Pm 230
Crane control	2 control toggles with 2 electrical functions				
Operating pressure	205 bar	210 bar	220 bar	220 bar	190 bar
Pump flow rate recommended	50 - 100 l/min	50 - 120 l/min	50 - 120 l/min	50 - 120 l/min	35-90 l/min
Weight (approx.)	-	1,195 kg	1,390 kg	1,480 kg	945 kg
Price	23,030 €	24,930 €	23,030 €	27,100 €	13,700 €

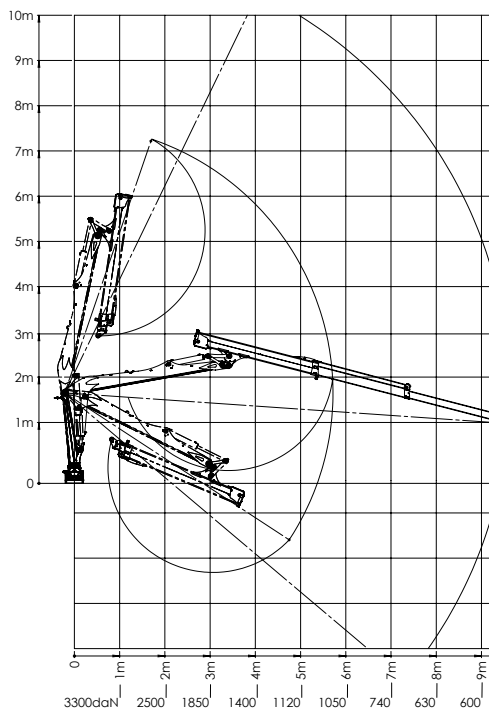
52100



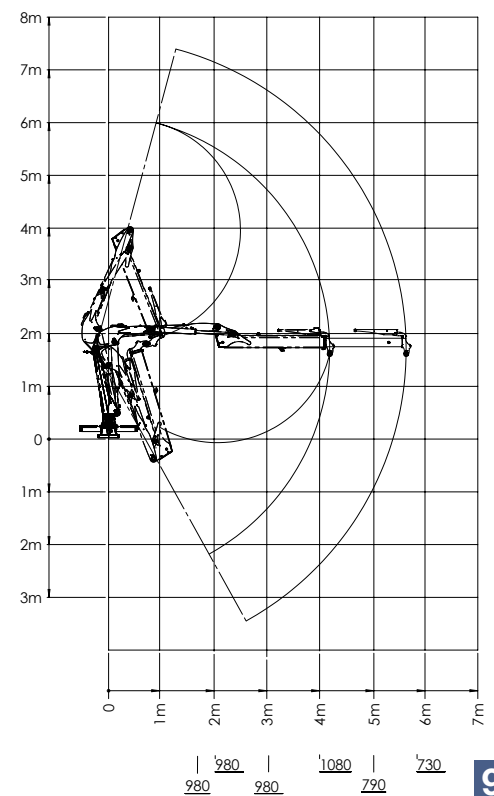
6280



62100



Z4359





Cranes for attachment on carrier vehicles

The use of cranes away from paved roads presents great challenges for the machinery, the material and safety. The Pfanzelt product range includes cranes for motorised vehicles and tractors as well as for mounting on trailers.

Add-on cranes for tractors

The forestry crane range includes cranes for 3-point and quick-fit attachments to standard tractors. The various advantages of the two attachment systems depend on the conditions of use of the customer. If the customer needs a flexible vehicle and wishes to use the tractor in combination with various trailers, the best solution is attachment via a special 3-point hitch system with integrated crane stabilisers. If, on the other hand, the crane is required for the forwarding of long timber, quick-fit attachment is the optimum solution. Pfanzelt quick-fit combinations of cable winch and loading crane fulfil these requirements and leave no wish unfulfilled when operated in combination with a standard tractor with reversing installation. With the modular quick-fit attachment system, the machine can be

rapidly fitted with new attachments.

Forestry cranes for mounting on wood chippers and trailers

The high performance Pfanzelt forestry cranes with powerful slewing gear are also perfectly suitable for mounting on trailer-chippers. Their modular design means that the crane can be ideally adapted to the vehicle – accordingly Pfanzelt cranes with different column heights are available.

Top:

5167 forwarding crane with 6.8 m reach and 5.1 m/t lifting force mounted on the Pm Forstrtrac.

Right:

7169 forwarding crane with 6.9 m reach and 7.1 m/t lifting force mounted on the Pm Forstrtrac.

Bottom:

Breakbulk loading crane with electronic lifting force monitoring and H-column stabilisers.



HERGESTELLT IN DEUTSCHLAND

Tested quality:



8.6 Technical specifications of add-on cranes

Add-on cranes for tractors (low column)

	5153	5167	7169	7182
Reach	5,090 mm	6,830 mm	6,930 mm	8,200 mm
Lift moment net	51 kNm	51 kNm	70 kNm	70 kNm
Pivoting moment	21.5 kNm	21.5 kNm	27 kNm	32 kNm
Slewing range	160°	160°	160°	160°
Telescope	single	single	double	double
Rotator, infinite	6.0 t	6.0 t	10.0 t	10.0 t
Gripper	Pm 270	Pm 270	Pm 360	Pm 360
Crane control	6-way EHC control with 2 joysticks			
Operating pressure	190 bar	190 bar	210 bar	210 bar
Pump flow rate recommended	35-90 l/min	35-90 l/min	50-100 l/min	50-100 l/min
Weight (approx.)	820 kg	850 kg	1,220 kg	1,360 kg

Add-on cranes for tractors (high column)

	7185	71100
Reach	8,300 mm	10,000 mm
Lift moment net	70 kNm	70 kNm
Pivoting moment	27 kNm	27 kNm
Slewing range	360°	360°
Telescope	double	double
Rotator, infinite	10.0 t	10.0 t
Gripper	Pm 360	Pm 360
Crane control	6-way EHC control with 2 joysticks	
Operating pressure	210 bar	210 bar
Pump flow rate recommended	50-100 l/min	50-100 l/min
Weight (approx.)	1,320 kg	1,420 kg



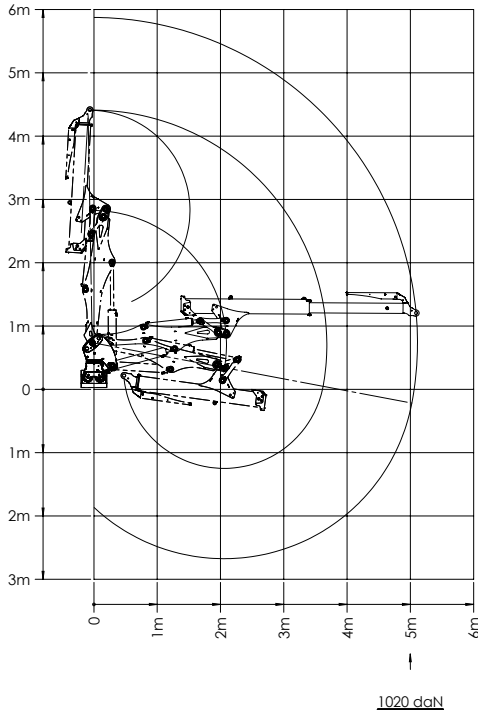
Information:

You will find an explanation of the technical specs of Pfanzelt forestry cranes from ► page 78.

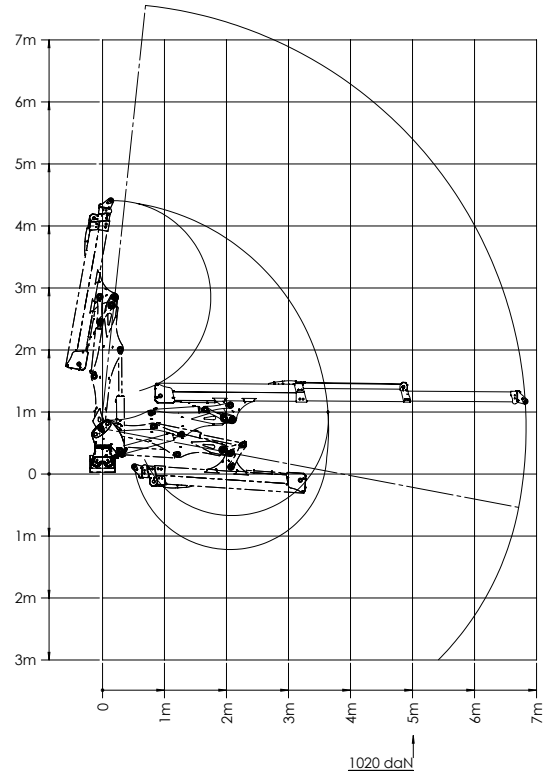
Logging crane

	5153	5167	7169
Reach	5,090 mm	6,830 mm	6,930 mm
Lifting moment gross/net	69 / 51 kNm	69 / 51 kNm	106 / 70 kNm
Pivoting moment	21.5 kNm	21.5 kNm	27 kNm
Slewing range	160°	160°	160°
Rotator, infinite	6.0 t	6.0 t	10.0 t
Gripper	Pm 270	Pm 270	Pm 360
Crane control	6-way EHC control with 2 joysticks		
Operating pressure	190 bar	190 bar	210 bar
Pump flow rate recommended	35-90 l/min	35-90 l/min	50-100 l/min
Weight (approx.)	820 kg	850 kg	1,220 kg
Price (without base and installation)	26,350 €	30,200 €	47,200 €

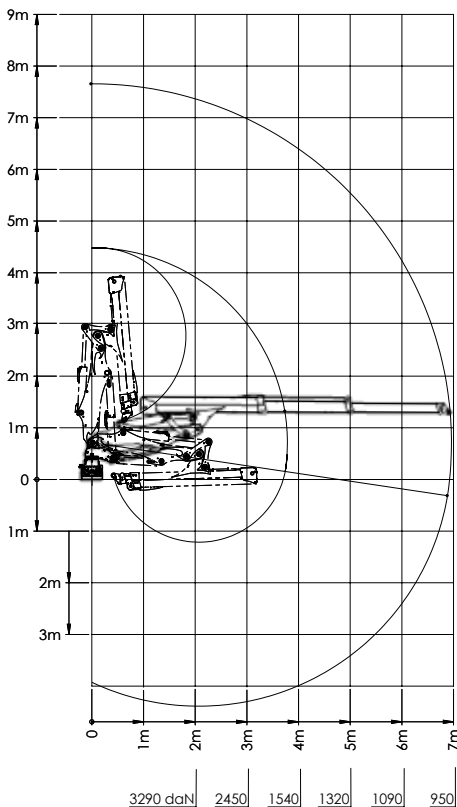
5153



5167



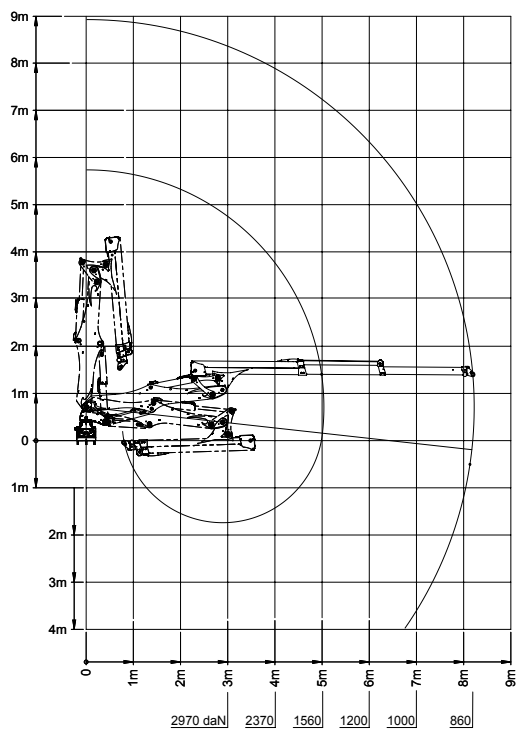
7169



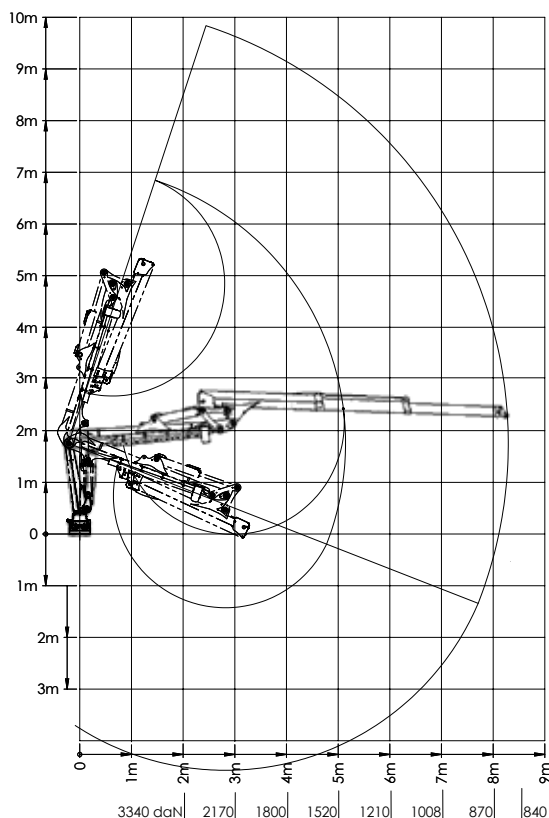
Logging / loading crane

	7182	7185	71100
Reach	8,190 mm	8,300 mm	10,000 mm
Lifting moment gross/net	106 / 70 kNm	106 / 70 kNm	112 / 70 kNm
Pivoting moment	32 kNm	27 kNm	27 kNm
Slewing range	160°	360°	360°
Rotator, infinite	10.0 t	10.0 t	10.0 t
Gripper	Pm 360	Pm 360	Pm 360
Crane control	6-way EHC control with 2 joysticks		
Operating pressure	210 bar	210 bar	210 bar
Pump flow rate recommended	50-100 l/min	50-100 l/min	50-100 l/min
Weight (approx.)	1,360 kg	1,320 kg	1,420 kg
Price (without base and installation)	49,800 €	45,300 €	47,200 €

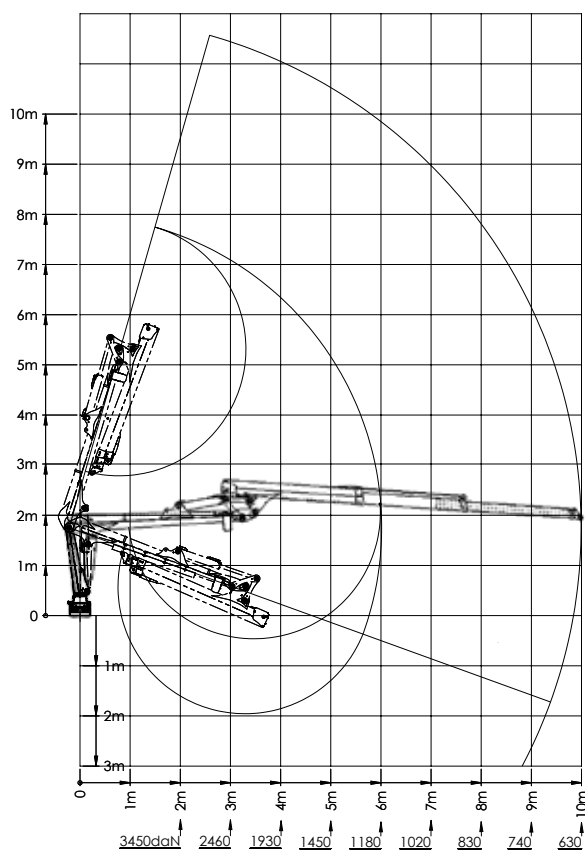
7182



7185



71100



Information:

The stated lift moments are maximum values and do not indicate the continuous lifting force. All figures are understood to exclude gripper and rotator. The maximum lifting force can only be achieved when sufficient hydraulic pressure is provided by the tractor unit or on the on-board hydraulics. The maximum system pressure must be adjusted to that the stability of the vehicle is assured.



Simple to attach, big lifting power

In addition to cranes for self-propelled vehicles and for mounting on trailers, the Pfanzelt product range also includes cranes for mounting on the 3-point linkage.

3-point linkage cranes for tractors

If the customer needs a flexible vehicle and wishes to use the tractor in combination with various trailers, the best solution is attachment via a special 3-point hitch system with integrated crane stabilisers. Basically all Pfanzelt forestry cranes from the series up to 5 m/t can be mounted on the tractor's 3-point linkage.

On this page you will find special offers for semi-professional operators. Your factory representative will be happy to provide you with other 3-point linkage cranes adapted to the individual requirements of your customer.

Reliable support

The Pfanzelt 3-point linkage mounting with integrate A-column support facilitates safe and convenient working.

Optimum parking stability for operating the loading crane is assured by the A-column stabilisers. The design ensures secure support even in dense standing timber. In addition to A-column support, H-column support is also available for large cranes.

Top:

3-point linkage crane 4267 with 6.4 m reach and 4.0 m/t lifting force with A-column support

Bottom:

3-point linkage crane 51100 with 10.0 m reach and 5.1 m/t lifting force with H-column support



HERGESTELLT IN DEUTSCHLAND

Tested quality:





3-point linkage crane	4267	4272	5280
Reach	6,370 mm	7,140 mm	7,800 mm
Lifting moment gross/net	56 / 40.5 kNm	56 / 40.5 kNm	70 / 50 kNm
Pivoting moment	15.2 kNm	15.2 kNm	21.5 kNm
Slewing range	370°	370°	370°
Rotator, infinite	4.5 t	4.5 t	4.5 t
Gripper	Pm 230	Pm 230	Pm 230
Crane control	2 control toggles with 2 electrical functions		
Operating pressure	190 bar	190 bar	205 bar
Pump flow rate recommended	35-90 l/min	35-90 l/min	50-100 l/min
A-support	•	•	•
3-point linkage crane	•	•	•
Weight (approx.)	910 kg	990 kg	1,105 kg
Price	13,590 €	14,690 €	20,870 €





For more information
visit our website at
www.pfanzelt-maschinenbau.de



Pfanzelt Maschinenbau GmbH

Frankau 37

D-87675 Rettenbach a. Auerberg

Tel. +49 (0) 88 60 / 92 17 -0

Fax +49 (0) 88 60 / 92 17 -17

E-Mail info@pfanzelt-maschinenbau.de

www.pfanzelt-maschinenbau.de

All prices, specifications and illustrations are non-binding. Changes due to technical developments reserved.